



[Go to Product page](#)

Datasheet for ABIN1312779

NOLC1 Protein (AA 590-699) (GST tag)

1 Image

Overview

Quantity:	10 µg
Target:	NOLC1
Protein Characteristics:	AA 590-699
Origin:	Human
Source:	Wheat germ
Protein Type:	Recombinant
Purification tag / Conjugate:	This NOLC1 protein is labelled with GST tag.
Application:	Western Blotting (WB), ELISA, Affinity Purification (AP), Antibody Array (AA)

Product Details

Purpose:	NOLC1 (Human) Recombinant Protein (Q01)
Sequence:	EAAKEAETPQ AKKIKLQTPN TFPKRKKG EK RASSPFRRVR EEEIEVDSRV ADNSFDAKRG AAGDWGERAN QVLKFTKGKS FRHEKTKKKR GSYRGG SISV QVNSIKFDSE
Characteristics:	Human NOLC1 partial ORF (NP_004732, 590 a.a. - 699 a.a.) recombinant protein with GST-tag at N-terminal.
Purification:	in vitro wheat germ expression system

Target Details

Target:	NOLC1
Alternative Name:	NOLC1 (NOLC1 Products)

Target Details

Background:	Full Gene Name: nucleolar and coiled-body phosphoprotein 1 Synonyms: KIAA0035,NOPP130,NOPP140,NS5ATP13,P130
Gene ID:	9221
NCBI Accession:	NM_004741
Pathways:	Regulation of G-Protein Coupled Receptor Protein Signaling

Application Details

Application Notes:	Optimal working dilution should be determined by the investigator.
Comment:	Preparation method: in vitro, wheat germ expression system Product Quality tested by: 12.5% SDS-PAGE Stained with Coomassie Blue.
Restrictions:	For Research Use only

Handling

Buffer:	50 mM Tris-HCl, 10 mM reduced Glutathione, pH =8.0 in the elution buffer.
Handling Advice:	Aliquot to avoid repeated freezing and thawing.
Storage:	-80 °C
Storage Comment:	Best use within three months from the date of receipt of this protein.

Images

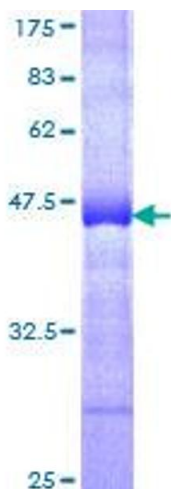


Image 1.