



[Go to Product page](#)

Datasheet for ABIN1312801

## NOS2 Protein (AA 685-794) (GST tag)

### 1 Image

#### Overview

Quantity:	10 µg
Target:	NOS2
Protein Characteristics:	AA 685-794
Origin:	Human
Source:	Wheat germ
Protein Type:	Recombinant
Purification tag / Conjugate:	This NOS2 protein is labelled with GST tag.
Application:	Western Blotting (WB), ELISA, Affinity Purification (AP), Antibody Array (AA)

#### Product Details

Purpose:	NOS2A (Human) Recombinant Protein (Q01)
Sequence:	DVRGKQHIQI PKLYTSNVTW DPHHYRLVQD SQPLDLSKAL SSMHAKNVFT MRLKSRQNLQ SPTSSRATIL VELSCEDGQG LNYLPGEHLG VCPGNQPALV QGILERVVDG
Characteristics:	Human NOS2A partial ORF ( NP_000616, 685 a.a. - 794 a.a.) recombinant protein with GST-tag at N-terminal.
Purification:	in vitro wheat germ expression system

#### Target Details

Target:	NOS2
Alternative Name:	NOS2 ( <a href="#">NOS2 Products</a> )

## Target Details

Background:	Full Gene Name: nitric oxide synthase 2, inducible Synonyms: HEP-NOS,INOS,NOS,NOS2A
Gene ID:	4843
NCBI Accession:	<a href="#">NM_000625</a>
Pathways:	<a href="#">Retinoic Acid Receptor Signaling Pathway</a> , <a href="#">Cellular Response to Molecule of Bacterial Origin</a> , <a href="#">Inositol Metabolic Process</a> , <a href="#">Regulation of Leukocyte Mediated Immunity</a> , <a href="#">Positive Regulation of Immune Effector Process</a>

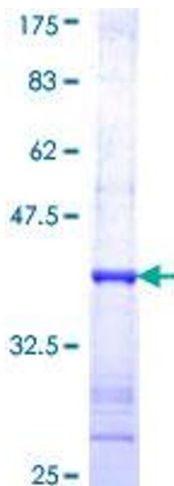
## Application Details

Application Notes:	Optimal working dilution should be determined by the investigator.
Comment:	Preparation method: in vitro, wheat germ expression system Product Quality tested by: 12.5% SDS-PAGE Stained with Coomassie Blue.
Restrictions:	For Research Use only

## Handling

Buffer:	50 mM Tris-HCl, 10 mM reduced Glutathione, pH =8.0 in the elution buffer.
Handling Advice:	Aliquot to avoid repeated freezing and thawing.
Storage:	-80 °C
Storage Comment:	Best use within three months from the date of receipt of this protein.

## Images



**Image 1.**