



[Go to Product page](#)

Datasheet for ABIN1312817

## NOTUM Protein (AA 1-430) (GST tag)

### 1 Image

#### Overview

Quantity:	10 µg
Target:	NOTUM
Protein Characteristics:	AA 1-430
Origin:	Human
Source:	Wheat germ
Protein Type:	Recombinant
Purification tag / Conjugate:	This NOTUM protein is labelled with GST tag.
Application:	ELISA, Western Blotting (WB), Affinity Purification (AP), Antibody Array (AA)

#### Product Details

Purpose:	LOC147111 (Human) Recombinant Protein (P01)
Sequence:	MAQVKSLAQS LYPCSAQQLN EDLRLHLLLN TSVTCNDGSP AGYYLKESRG SRRWLLFLEG GWYCFNRENC DSRDYDTMRRM MSSRDWPRTT TGTGILSSQP EENPYWWNAN MVFIPYCSSD VWSGASSKSE KNEYAFMGAL IIQEVVRELL GRGLSGAKVL LLAGSSAGGT GVLLNVDRVA EQLEKLGYPV IQVRGLADSG WFLDNKQYRH TDCVDTITCA PTEAIRRGIR YWNGVVPERC RRQFQEGEEW NCFFGYKVYP TLRCPVFVVQ WLFDEAQLTV DNVHLTGQPV QEGLRLYIQN LGRELRHTLK DVPASFAPAC LSHEIIRSH WTDVQVKGTS LPRALHCWDR SLHDSHKASK TPLKGCVPVHL VDSCPWPHCN PSCPTVRDQF TGQEMNVAQF LMHMGFDMQT VAQPQGLEPS ELLGMLSNGS
Characteristics:	Human LOC147111 full-length ORF ( AAH60882, 1 a.a. - 430 a.a.) recombinant protein with GST-tag at N-terminal.

## Product Details

---

Purification: in vitro wheat germ expression system

## Target Details

---

Target: NOTUM

Alternative Name: NOTUM ([NOTUM Products](#))

Background: Gene: notum pectinacylesterase homolog (Drosophila)

Gene ID: 147111

## Application Details

---

Application Notes: Optimal working dilution should be determined by the investigator.

Restrictions: For Research Use only

## Handling

---

Buffer: 50 mM Tris-HCl, 10 mM reduced Glutathione, pH =8.0 in the elution buffer.

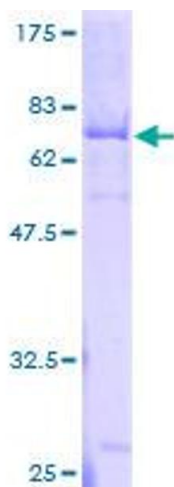
Handling Advice: Aliquot to avoid repeated freezing and thawing.

Storage: -80 °C

Storage Comment: Best use within three months from the date of receipt of this protein.

## Images

---



**Image 1.**