



[Go to Product page](#)

Datasheet for ABIN1312840

## NIPAL3 Protein (AA 21-226) (GST tag)

### 1 Image

#### Overview

Quantity:	10 µg
Target:	NIPAL3
Protein Characteristics:	AA 21-226
Origin:	Human
Source:	Wheat germ
Protein Type:	Recombinant
Purification tag / Conjugate:	This NIPAL3 protein is labelled with GST tag.
Application:	ELISA, Western Blotting (WB), Affinity Purification (AP), Antibody Array (AA)

#### Product Details

Purpose:	DJ462023.2 (Human) Recombinant Protein (P01)
Sequence:	SAVSEASFSY KENLIGALLA IFGHLVVSIA LNLQKYCHIR LAGSKDPRAY FKTKTWLGL FLMLLGELGV FASYAFAPLS LIVPLSAVSV IASAIIGIIF IKEKWPKDF LRRYVLSFVG CGLAVVGYTL LVTFAPNSHE KMTGENVTRH LVSWPFLLYM LVEIILFCLL LYFYKEKNAN NIVVILLLVA LLVLLCHPGW SAVVQS
Characteristics:	Human DJ462023.2 full-length ORF ( AAH01265, 21 a.a. - 226 a.a.) recombinant protein with GST-tag at N-terminal.
Purification:	in vitro wheat germ expression system

#### Target Details

Target:	NIPAL3
---------	--------

## Target Details

Alternative Name:	NPAL3 ( <a href="#">NIPAL3 Products</a> )
Background:	Full Gene Name: NIPA-like domain containing 3 Synonyms: DJ462O23.2,DKFZp686E22155
Gene ID:	57185

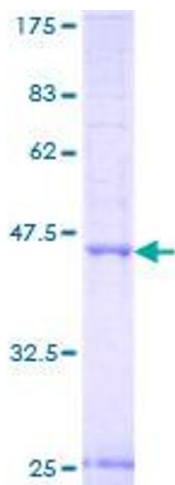
## Application Details

Application Notes:	Optimal working dilution should be determined by the investigator.
Comment:	Preparation method: in vitro, wheat germ expression system Product Quality tested by: 12.5% SDS-PAGE Stained with Coomassie Blue.
Restrictions:	For Research Use only

## Handling

Buffer:	50 mM Tris-HCl, 10 mM reduced Glutathione, pH =8.0 in the elution buffer.
Handling Advice:	Aliquot to avoid repeated freezing and thawing.
Storage:	-80 °C
Storage Comment:	Best use within three months from the date of receipt of this protein.

## Images



**Image 1.**