



[Go to Product page](#)

Datasheet for ABIN1312851

NPC2 Protein (AA 1-151) (GST tag)

1 Image

Overview

Quantity:	10 µg
Target:	NPC2
Protein Characteristics:	AA 1-151
Origin:	Human
Source:	Wheat germ
Protein Type:	Recombinant
Purification tag / Conjugate:	This NPC2 protein is labelled with GST tag.
Application:	ELISA, Western Blotting (WB), Affinity Purification (AP), Antibody Array (AA)

Product Details

Purpose:	NPC2 (Human) Recombinant Protein (P01)
Sequence:	MRFLAATFLL LALSTAAQAE PVQFKDCGSV DGVIKEVNVS PCPTQPCQLS KGQSYSVNVNVT FTSNIQSKSS KAVVHGILMG VPVPFPIPEP DGCKSGINCP IQKDKTYSYL NKLPVKSEYP SIKLVVEWQL QDDKNQSLFC WEIPVQIVSH L
Characteristics:	Human NPC2 full-length ORF (AAH02532, 1 a.a. - 151 a.a.) recombinant protein with GST-tag at N-terminal.
Purification:	in vitro wheat germ expression system

Target Details

Target:	NPC2
Alternative Name:	NPC2 (NPC2 Products)

Target Details

Background: Full Gene Name: Niemann-Pick disease, type C2
Synonyms: HE1,MGC1333,NP-C2

Gene ID: 10577

Pathways: [SARS-CoV-2 Protein Interactome](#)

Application Details

Application Notes: Optimal working dilution should be determined by the investigator.

Comment: Preparation method: in vitro, wheat germ expression system
Product Quality tested by: 12.5% SDS-PAGE Stained with Coomassie Blue.

Restrictions: For Research Use only

Handling

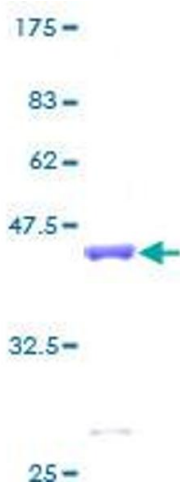
Buffer: 50 mM Tris-HCl, 10 mM reduced Glutathione, pH =8.0 in the elution buffer.

Handling Advice: Aliquot to avoid repeated freezing and thawing.

Storage: -80 °C

Storage Comment: Best use within three months from the date of receipt of this protein.

Images



SDS-PAGE

Image 1.