



[Go to Product page](#)

Datasheet for ABIN1312859

Neuropeptide FF Protein (NPFF) (AA 1-116) (GST tag)

1 Image

Overview

Quantity:	10 µg
Target:	Neuropeptide FF (NPFF)
Protein Characteristics:	AA 1-116
Origin:	Human
Source:	Wheat germ
Protein Type:	Recombinant
Purification tag / Conjugate:	This Neuropeptide FF protein is labelled with GST tag.
Application:	Western Blotting (WB), Affinity Purification (AP), Antibody Array (AA), ELISA

Product Details

Purpose:	NPFF (Human) Recombinant Protein (P01)
Sequence:	MVPQPPTTCP WKPVPSPCDL RVQGICPSSF PDTPLAQEED SEPLPPQDAQ TSGSLLHYLL QAMERPGRSQ AFLFQPQRFQ RNTQGSWRNE WLSPRAGEGL NSQFWSLAAP QRFQKK
Characteristics:	Human NPFF full-length ORF (AAI04235.1, 1 a.a. - 116 a.a.) recombinant protein with GST-tag at N-terminal.
Purification:	in vitro wheat germ expression system

Target Details

Target:	Neuropeptide FF (NPFF)
Alternative Name:	NPFF (NPFF Products)

Target Details

Background: Gene: neuropeptide FF-amide peptide precursor
Synonyms: FMRFAL

Gene ID: 8620

Application Details

Application Notes: Optimal working dilution should be determined by the investigator.

Restrictions: For Research Use only

Handling

Buffer: 50 mM Tris-HCl, 10 mM reduced Glutathione, pH =8.0 in the elution buffer.

Handling Advice: Aliquot to avoid repeated freezing and thawing.

Storage: -80 °C

Storage Comment: Best use within three months from the date of receipt of this protein.

Images

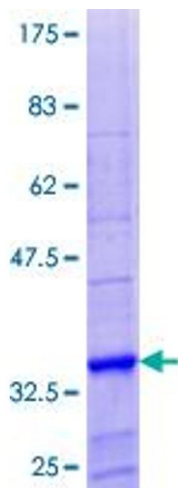


Image 1.