



[Go to Product page](#)

Datasheet for ABIN1312869

NPHP4 Protein (AA 1317-1426) (GST tag)

1 Image

Overview

Quantity:	10 µg
Target:	NPHP4
Protein Characteristics:	AA 1317-1426
Origin:	Human
Source:	Wheat germ
Protein Type:	Recombinant
Purification tag / Conjugate:	This NPHP4 protein is labelled with GST tag.
Application:	ELISA, Western Blotting (WB), Affinity Purification (AP), Antibody Array (AA)

Product Details

Purpose:	NPHP4 (Human) Recombinant Protein (Q01)
Sequence:	ASWLVCLCCR QPLISKAFEI MLAAGEGKGV NKRITYTNPY PSRRTFHLHS DHPPELLRFRE DSFQVGGGET YTIGLQFAPS QRVGEEIILI YINDHEDKNE EAFVCVKVIYQ
Characteristics:	Human NPHP4 partial ORF (NP_055917.1, 1317 a.a. - 1426 a.a.) recombinant protein with GST-tag at N-terminal.
Purification:	in vitro wheat germ expression system

Target Details

Target:	NPHP4
Alternative Name:	NPHP4 (NPHP4 Products)

Target Details

Background: Full Gene Name: nephronophthisis 4
Synonyms: KIAA0673,SLSN4

Gene ID: 261734

NCBI Accession: [NM_015102](#)

Application Details

Application Notes: Optimal working dilution should be determined by the investigator.

Comment: Preparation method: in vitro, wheat germ expression system
Product Quality tested by: 12.5% SDS-PAGE Stained with Coomassie Blue.

Restrictions: For Research Use only

Handling

Buffer: 50 mM Tris-HCl, 10 mM reduced Glutathione, pH =8.0 in the elution buffer.

Handling Advice: Aliquot to avoid repeated freezing and thawing.

Storage: -80 °C

Storage Comment: Best use within three months from the date of receipt of this protein.

Images

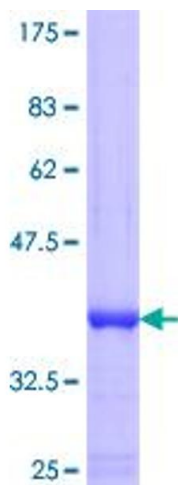


Image 1.