



[Go to Product page](#)

Datasheet for ABIN1312884

NPM2 Protein (AA 1-214) (GST tag)

1 Image

Overview

Quantity:	10 µg
Target:	NPM2
Protein Characteristics:	AA 1-214
Origin:	Human
Source:	Wheat germ
Protein Type:	Recombinant
Purification tag / Conjugate:	This NPM2 protein is labelled with GST tag.
Application:	ELISA, Western Blotting (WB), Affinity Purification (AP), Antibody Array (AA)

Product Details

Purpose:	NPM2 (Human) Recombinant Protein (P01)
Sequence:	MNLSSASSTE EKA VTTVLWG CELSQERRTW TFRPQLEGKQ SCRLLLHTIC LGKAKEEMH RVEILPPANQ EDKMKQPVTI ASLQASVLPM VSMVGVQLSP PVTFQLRAGS GPVFLSGQER YEASDLTWEE EEEEEEEEEEE EEEEEDEDED ADISLEEQSP VKQVKRLVPQ KQASVAKKKK LEKEEEEIRA SVRDKSPVKK AKATARAKKP GFKK
Characteristics:	Human NPM2 full-length ORF (NP_877724.1, 1 a.a. - 214 a.a.) recombinant protein with GST-tag at N-terminal.
Purification:	in vitro wheat germ expression system

Target Details

Target:	NPM2
---------	------

Target Details

Alternative Name:	NPM2 (NPM2 Products)
Background:	Full Gene Name: nucleophosmin/nucleoplasmin, 2 Synonyms: MGC78655
Gene ID:	10361
NCBI Accession:	NM_182795

Application Details

Application Notes:	Optimal working dilution should be determined by the investigator.
Comment:	Preparation method: in vitro, wheat germ expression system Product Quality tested by: 12.5% SDS-PAGE Stained with Coomassie Blue.
Restrictions:	For Research Use only

Handling

Buffer:	50 mM Tris-HCl, 10 mM reduced Glutathione, pH =8.0 in the elution buffer.
Handling Advice:	Aliquot to avoid repeated freezing and thawing.
Storage:	-80 °C
Storage Comment:	Best use within three months from the date of receipt of this protein.

Images

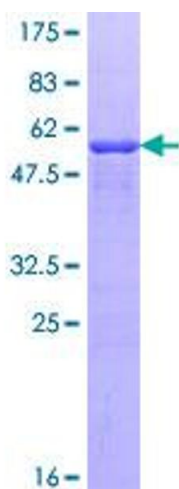


Image 1.