



[Go to Product page](#)

Datasheet for ABIN1312940  
**NR1I2 Protein (AA 279-378) (GST tag)**

1 Image

Overview

Quantity:	10 µg
Target:	NR1I2
Protein Characteristics:	AA 279-378
Origin:	Human
Source:	Wheat germ
Protein Type:	Recombinant
Purification tag / Conjugate:	This NR1I2 protein is labelled with GST tag.
Application:	Western Blotting (WB), ELISA, Affinity Purification (AP), Antibody Array (AA)

Product Details

Purpose:	NR1I2 (Human) Recombinant Protein (Q01)
Sequence:	LHEEEYVLMQ AISLFSPDRP GVLQHRVVDQ LQEQFAITLK SYIECNRPQP AHRFLFLKIM AMLTELR SIN AQHTQRLRLRI QDIHPFATPL MQELFGITGS
Characteristics:	Human NR1I2 partial ORF ( AAH17304, 279 a.a. - 378 a.a.) recombinant protein with GST-tag at N-terminal.
Purification:	in vitro wheat germ expression system

Target Details

Target:	NR1I2
Alternative Name:	NR1I2 ( <a href="#">NR1I2 Products</a> )

## Target Details

Background: Full Gene Name: nuclear receptor subfamily 1, group I, member 2  
Synonyms: BXR,ONR1,PAR,PAR1,PAR2,PARq,PRR,PXR,SAR,SXR

Gene ID: 8856

Pathways: [Nuclear Receptor Transcription Pathway](#), [Steroid Hormone Mediated Signaling Pathway](#)

## Application Details

Application Notes: Optimal working dilution should be determined by the investigator.

Comment: Preparation method: in vitro, wheat germ expression system  
Product Quality tested by: 12.5% SDS-PAGE Stained with Coomassie Blue.

Restrictions: For Research Use only

## Handling

Buffer: 50 mM Tris-HCl, 10 mM reduced Glutathione, pH =8.0 in the elution buffer.

Handling Advice: Aliquot to avoid repeated freezing and thawing.

Storage: -80 °C

Storage Comment: Best use within three months from the date of receipt of this protein.

## Images

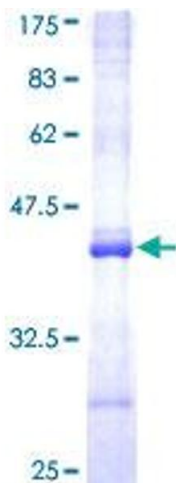


Image 1.