



[Go to Product page](#)

Datasheet for ABIN1312942

NR1I3 Protein (AA 1-352) (GST tag)

1 Image

Overview

Quantity:	25 µg
Target:	NR1I3
Protein Characteristics:	AA 1-352
Origin:	Human
Source:	Wheat germ
Protein Type:	Recombinant
Purification tag / Conjugate:	This NR1I3 protein is labelled with GST tag.
Application:	Western Blotting (WB), ELISA, Affinity Purification (AP), Antibody Array (AA)

Product Details

Purpose:	NR1I3 (Human) Recombinant Protein (P01)
Sequence:	MASREDELRN CVVCGDQATG YHFNALTCEG CKGFFRRTVS KSIGPTCPFA GSCEVSKTQR RHCPACRLQK CLDAGMRKDM ILSAEALALR RAKQAQRRAQ QTPVQLSKEQ EELIRTLGGA HTRHMGTMFE QFVQFRPPAH LFIHHQPLPT LAPVLPLVTH FADINTFMVL QVIKFTKDLP VFRSLPIEDQ ISLLKGAAVE ICHIVLNTTF CLQTQNFLCG PLRYTIEDGA RVSPTVGFQV EFLELLFHFH GTLRKLQLQE PEYVLLAAMA LFSPDRPGVT QRDEIDQLQE EMALTLQSYI KGQQRPRDR FLYAKLLGLL AELRSINEAY GYQIQHIQGL SAMMPLLQEI CS
Characteristics:	Human NR1I3 full-length ORF (NP_001070948.1, 1 a.a. - 352 a.a.) recombinant protein with GST-tag at N-terminal.
Purification:	in vitro wheat germ expression system

Target Details

Target:	NR1I3
Alternative Name:	NR1I3 (NR1I3 Products)
Background:	Full Gene Name: nuclear receptor subfamily 1, group I, member 3 Synonyms: CAR,CAR1,MB67,MGC150433,MGC97144,MGC97209
Gene ID:	9970
NCBI Accession:	NM_001077480
Pathways:	Nuclear Receptor Transcription Pathway , Intracellular Steroid Hormone Receptor Signaling Pathway , Steroid Hormone Mediated Signaling Pathway

Application Details

Application Notes:	Optimal working dilution should be determined by the investigator.
Comment:	Preparation method: in vitro, wheat germ expression system Product Quality tested by: 12.5% SDS-PAGE Stained with Coomassie Blue.
Restrictions:	For Research Use only

Handling

Buffer:	50 mM Tris-HCl, 10 mM reduced Glutathione, pH =8.0 in the elution buffer.
Handling Advice:	Aliquot to avoid repeated freezing and thawing.
Storage:	-80 °C
Storage Comment:	Best use within three months from the date of receipt of this protein.

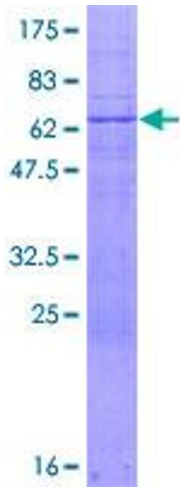


Image 1.