



[Go to Product page](#)

Datasheet for ABIN1312954  
**NR2C2AP Protein (AA 40-139) (GST tag)**

1 Image

Overview

Quantity:	10 µg
Target:	NR2C2AP
Protein Characteristics:	AA 40-139
Origin:	Human
Source:	Wheat germ
Protein Type:	Recombinant
Purification tag / Conjugate:	This NR2C2AP protein is labelled with GST tag.
Application:	ELISA, Western Blotting (WB), Affinity Purification (AP), Antibody Array (AA)

Product Details

Purpose:	TRA16 (Human) Recombinant Protein (Q01)
Sequence:	NSDQGPSQWV TLEFPQLIRV SQLQIQFQGG FSSRRGCLEG SQGTQALHKKI VDFYPEDNNS LQTFPIPAAE VDRLKVTFFED ATDFFGRVVI YHLRVLGEKV
Characteristics:	Human TRA16 partial ORF ( NP_795361, 40 a.a. - 139 a.a.) recombinant protein with GST-tag at N-terminal.
Purification:	in vitro wheat germ expression system

Target Details

Target:	NR2C2AP
Alternative Name:	NR2C2AP ( <a href="#">NR2C2AP Products</a> )

## Target Details

Background:	Full Gene Name: nuclear receptor 2C2-associated protein Synonyms: TRA16
Gene ID:	126382
NCBI Accession:	<a href="#">NM_176880</a>
Pathways:	<a href="#">Nuclear Receptor Transcription Pathway</a>

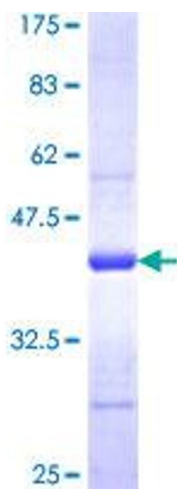
## Application Details

Application Notes:	Optimal working dilution should be determined by the investigator.
Comment:	Preparation method: in vitro, wheat germ expression system Product Quality tested by: 12.5% SDS-PAGE Stained with Coomassie Blue.
Restrictions:	For Research Use only

## Handling

Buffer:	50 mM Tris-HCl, 10 mM reduced Glutathione, pH =8.0 in the elution buffer.
Handling Advice:	Aliquot to avoid repeated freezing and thawing.
Storage:	-80 °C
Storage Comment:	Best use within three months from the date of receipt of this protein.

## Images



**Image 1.**