



[Go to Product page](#)

Datasheet for ABIN1312962

## NR2F1 Protein (AA 1-423) (GST tag)

### 1 Image

#### Overview

Quantity:	25 µg
Target:	NR2F1
Protein Characteristics:	AA 1-423
Origin:	Human
Source:	Wheat germ
Protein Type:	Recombinant
Purification tag / Conjugate:	This NR2F1 protein is labelled with GST tag.
Application:	ELISA, Western Blotting (WB), Affinity Purification (AP), Antibody Array (AA)

#### Product Details

Purpose:	NR2F1 (Human) Recombinant Protein (P01)
Sequence:	MAMVSSWRD PQDDVAGGNP GGPNPAAQAA RGGGGGAGEQ QQQAGSGAPH TPQTPGQPGA PATPGTAGDK GQPPGSGQS QQHIECVVCG DKSSGKHYGQ FTCEGCKSFF KRSVRRNLTY TCRANRNCPI DQHHRNQCQY CRLKKCLKVG MRREAVQRGR MPPTQPNPGQ YALTNGDPLN GHCYLSGYIS LLLRAEPYPT SRYGSQCMQP NNIMGIENIC ELAARLLFSA VEWARNIPFF PDLQITDQVS LLRLTWSELF VLNAAQCSMP LHVAPLLAAA GLHASPMSAD RVVAFMDHIR IFQEQVEKLG ALHVDSA EYS CLKAVLFTS DACGLS DAAH IESLQEK SQC ALEEYVRSQY PNQPSRFGKL LLRLPSLRTV SSSVIEQLFF VRLVGKTPIE TLIRDMLLSG SSFNWPYMSI QCS
Characteristics:	Human NR2F1 full-length ORF ( NP_005645.1, 1 a.a. - 423 a.a.) recombinant protein with GST-tag at N-terminal.
Purification:	in vitro wheat germ expression system

## Target Details

Target:	NR2F1
Alternative Name:	NR2F1 ( <a href="#">NR2F1 Products</a> )
Background:	Full Gene Name: nuclear receptor subfamily 2, group F, member 1 Synonyms: COUP-TFI,EAR-3,EAR3,ERBAL3,NR2F2,SVP44,TCFCOUP1,TFCOUP1
Gene ID:	7025
NCBI Accession:	<a href="#">NM_005654</a>
Pathways:	<a href="#">Nuclear Receptor Transcription Pathway</a> , <a href="#">Steroid Hormone Mediated Signaling Pathway</a>

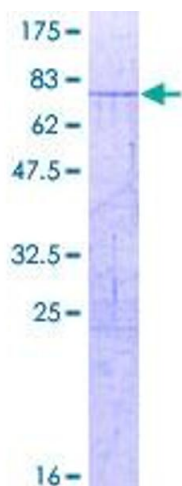
## Application Details

Application Notes:	Optimal working dilution should be determined by the investigator.
Comment:	Preparation method: in vitro, wheat germ expression system Product Quality tested by: 12.5% SDS-PAGE Stained with Coomassie Blue.
Restrictions:	For Research Use only

## Handling

Buffer:	50 mM Tris-HCl, 10 mM reduced Glutathione, pH =8.0 in the elution buffer.
Handling Advice:	Aliquot to avoid repeated freezing and thawing.
Storage:	-80 °C
Storage Comment:	Best use within three months from the date of receipt of this protein.

## Images



**Image 1.**