



[Go to Product page](#)

Datasheet for ABIN1312968

NR2F2 Protein (AA 283-342) (GST tag)

1 Image

Overview

Quantity:	10 µg
Target:	NR2F2
Protein Characteristics:	AA 283-342
Origin:	Human
Source:	Wheat germ
Protein Type:	Recombinant
Purification tag / Conjugate:	This NR2F2 protein is labelled with GST tag.
Application:	ELISA, Western Blotting (WB), Affinity Purification (AP), Antibody Array (AA)

Product Details

Purpose:	NR2F2 (Human) Recombinant Protein (Q02)
Sequence:	DRVVAFMDHI RIFQEQVEKL KALHVDSA EY SCLKAIVLFT SDACGLSDVA HVESLQEKSQ
Characteristics:	Human NR2F2 partial ORF (NP_066285, 283 a.a. - 342 a.a.) recombinant protein with GST-tag at N-terminal.
Purification:	in vitro wheat germ expression system

Target Details

Target:	NR2F2
Alternative Name:	NR2F2 (NR2F2 Products)
Background:	Full Gene Name: nuclear receptor subfamily 2, group F, member 2

Target Details

Synonyms: ARP1,COUP-TFII,COUPTFB,MGC117452,SVP40,TFCOUP2

Gene ID: 7026

NCBI Accession: [NM_021005](#)

Pathways: [Steroid Hormone Mediated Signaling Pathway](#)

Application Details

Application Notes: Optimal working dilution should be determined by the investigator.

Comment: Preparation method: in vitro, wheat germ expression system
Product Quality tested by: 12.5% SDS-PAGE Stained with Coomassie Blue

Restrictions: For Research Use only

Handling

Buffer: 50 mM Tris-HCl, 10 mM reduced Glutathione, pH =8.0 in the elution buffer.

Handling Advice: Aliquot to avoid repeated freezing and thawing.

Storage: -80 °C

Storage Comment: Best use within three months from the date of receipt of this protein.

Images

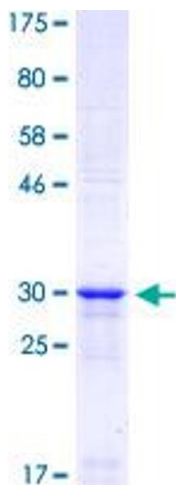


Image 1.