



[Go to Product page](#)

Datasheet for ABIN1312975

## NR3C2 Protein (AA 1-110) (GST tag)

### 1 Image

#### Overview

Quantity:	10 µg
Target:	NR3C2
Protein Characteristics:	AA 1-110
Origin:	Human
Source:	Wheat germ
Protein Type:	Recombinant
Purification tag / Conjugate:	This NR3C2 protein is labelled with GST tag.
Application:	Western Blotting (WB), ELISA, Affinity Purification (AP), Antibody Array (AA)

#### Product Details

Purpose:	NR3C2 (Human) Recombinant Protein (Q01)
Sequence:	METKGYHSLP EGLDMERRWG QVSQAVERS LGPTERTDEN NYMEIVNVSC VSGAIPNNST QGSSKEKQEL LPCLQQDNNR PGILTSDIKT ELESKELSAT VAESMGLYMD
Characteristics:	Human NR3C2 partial ORF ( NP_000892, 1 a.a. - 110 a.a.) recombinant protein with GST-tag at N-terminal.
Purification:	in vitro wheat germ expression system

#### Target Details

Target:	NR3C2
Alternative Name:	NR3C2 ( <a href="#">NR3C2 Products</a> )

## Target Details

---

Background: Gene: nuclear receptor subfamily 3, group C, member 2  
Synonyms: MCR, MGC133092, MLR, MR

---

Gene ID: 4306

---

NCBI Accession: [NM\\_000901](#)

---

Pathways: [ACE Inhibitor Pathway](#), [Nuclear Receptor Transcription Pathway](#), [Intracellular Steroid Hormone Receptor Signaling Pathway](#), [Steroid Hormone Mediated Signaling Pathway](#)

---

## Application Details

---

Application Notes: Optimal working dilution should be determined by the investigator.

---

Restrictions: For Research Use only

---

## Handling

---

Buffer: 50 mM Tris-HCl, 10 mM reduced Glutathione, pH =8.0 in the elution buffer.

---

Handling Advice: Aliquot to avoid repeated freezing and thawing.

---

Storage: -80 °C

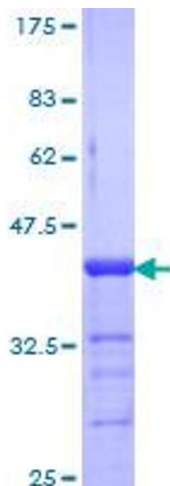
---

Storage Comment: Best use within three months from the date of receipt of this protein.

---

## Images

---



**Image 1.**