

Datasheet for ABIN1313005
NRBP1 Protein (AA 1-535) (GST tag)



[Go to Product page](#)

1 Image

Overview

Quantity:	10 µg
Target:	NRBP1
Protein Characteristics:	AA 1-535
Origin:	Human
Source:	Wheat germ
Protein Type:	Recombinant
Purification tag / Conjugate:	This NRBP1 protein is labelled with GST tag.
Application:	ELISA, Western Blotting (WB), Affinity Purification (AP), Antibody Array (AA)

Product Details

Purpose:	NRBP1 (Human) Recombinant Protein (P01)
Sequence:	MSEGESQTVL SSGSDPKVES SSSAPGLTSV SPPVTSTTSA ASPEEEEESE DESEILEESP CGRWQKRREE VNQRNVPGID SAYLAMDTTE GVEVVWNEVQ FSERKKNYKQ EEKVRAVFDN LIQLEHLNIV KFHKYWADIK ENKARVIFIT EYMSSGSLKQ FLKKTKNHK TMNEKAWKRW CTQILSALS Y LHSCDPPIIH GNLTCDTIFI QHNGLIKIGS VAPDTINNHV KTCREEQKNL HFFAPEYGEV TNVTTAVDIY SFGMCALEMA VLEIQNGES SYVPQEAISS AIQLLEDPLQ REFIQKCLQS EPARRPTARE LLFHPALFEV PSLKLLAAHC IVGHQHMIPE NALEEITKNM DTSAVLAEIP AGPGREPVQT LYSQSPALEL DKFLEDVRNG IYPLTAFGLP RPQQPQQEEV TSPVPPSVK TPTPEPAEVE TRKVVLMOQN IESVEEGVKH HLTLLKLED KLNRLHSCDL MPNENIPELA AELVQLGFIS EADQSRLTSL LEETLNKFNF ARNSTLNSAA VTVSS
Characteristics:	Human NRBP1 full-length ORF (AAH01221, 1 a.a. - 535 a.a.) recombinant protein with GST-tag at N-terminal.

Product Details

Purification: in vitro wheat germ expression system

Target Details

Target: NRBP1

Alternative Name: NRBP1 ([NRBP1 Products](#))

Background: Full Gene Name: nuclear receptor binding protein 1
Synonyms: BCON3,FLJ27109,FLJ35541,MADM,MUDPNP,NRBP

Gene ID: 29959

Pathways: [Nuclear Receptor Transcription Pathway](#)

Application Details

Application Notes: Optimal working dilution should be determined by the investigator.

Comment: Preparation method: in vitro, wheat germ expression system
Product Quality tested by: 12.5% SDS-PAGE Stained with Coomassie Blue.

Restrictions: For Research Use only

Handling

Buffer: 50 mM Tris-HCl, 10 mM reduced Glutathione, pH =8.0 in the elution buffer.

Handling Advice: Aliquot to avoid repeated freezing and thawing.

Storage: -80 °C

Storage Comment: Best use within three months from the date of receipt of this protein.

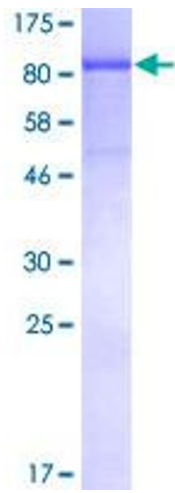


Image 1.