

Datasheet for ABIN1313009

NRBP2 Protein (NRBP2) (AA 1-258) (GST tag)[Go to Product page](#)**1** Image

Overview

Quantity:	10 µg
Target:	NRBP2
Protein Characteristics:	AA 1-258
Origin:	Human
Source:	Wheat germ
Protein Type:	Recombinant
Purification tag / Conjugate:	This NRBP2 protein is labelled with GST tag.
Application:	ELISA, Western Blotting (WB), Affinity Purification (AP), Antibody Array (AA)

Product Details

Purpose:	NRBP2 (Human) Recombinant Protein (P01)
Sequence:	MCALEMAVLE IQTNGDTRVT EEAIARARHS LSDPNMREFI LCCLARDPAR RPSAHSLLFH RVLFEVHSLK LLAHCFIQH QYLPENVVE EGTKAMDHLA VLAELPRPRR PPLQWRYSEV SFMELDKFLE DVRNGIYPLM NFAATRPLGL PRVLAPPEE VQKAKTPTPE PFDSETRKVI QMQCNLERSE DKARWHLTLL LVLEDRLHRQ LTYDLLPTDS AQDLASELVH YGFLHEDDRM KLAAFLESTF LKYRGTQA
Characteristics:	Human NRBP2 full-length ORF (NP_848659.1, 1 a.a. - 258 a.a.) recombinant protein with GST-tag at N-terminal.
Purification:	in vitro wheat germ expression system

Target Details

Target:	NRBP2
Alternative Name:	NRBP2 (NRBP2 Products)
Background:	Full Gene Name: nuclear receptor binding protein 2 Synonyms: DKFZp434P086,MGC138699,TRG16,pp9320
Gene ID:	340371
NCBI Accession:	NM_178564

Application Details

Application Notes:	Optimal working dilution should be determined by the investigator.
Comment:	Preparation method: in vitro, wheat germ expression system Product Quality tested by: 12.5% SDS-PAGE Stained with Coomassie Blue.
Restrictions:	For Research Use only

Handling

Buffer:	50 mM Tris-HCl, 10 mM reduced Glutathione, pH =8.0 in the elution buffer.
Handling Advice:	Aliquot to avoid repeated freezing and thawing.
Storage:	-80 °C
Storage Comment:	Best use within three months from the date of receipt of this protein.

Images

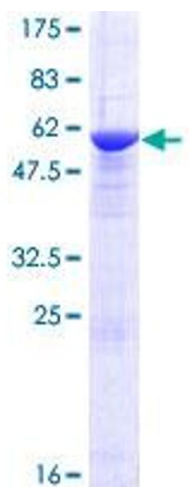


Image 1.