



[Go to Product page](#)

Datasheet for ABIN1313041

## Neuritin 1-Like Protein (NRN1L) (AA 1-165) (GST tag)

### 1 Image

#### Overview

Quantity:	25 µg
Target:	Neuritin 1-Like (NRN1L)
Protein Characteristics:	AA 1-165
Origin:	Human
Source:	Wheat germ
Protein Type:	Recombinant
Purification tag / Conjugate:	This Neuritin 1-Like protein is labelled with GST tag.
Application:	ELISA, Western Blotting (WB), Affinity Purification (AP), Antibody Array (AA)

#### Product Details

Purpose:	UNQ2446 (Human) Recombinant Protein (P01)
Sequence:	MMRCCRRRCC CRQPPHALRP LLLLPLVLLP PLAAAAAGPN RCDTIYQGFA ECLIRLGDSM GRGGELETIC RSWNDFHACA SQVLSGCPEE AAAVWESLQQ EARQAPRPNN LHTLCGAPVH VRERGTGSKT NQETLRATAP ALPMAPAPPL LAAALALAYL LRPLA
Characteristics:	Human UNQ2446 full-length ORF ( AAI00864.1, 1 a.a. - 165 a.a.) recombinant protein with GST-tag at N-terminal.
Purification:	in vitro wheat germ expression system

#### Target Details

Target:	Neuritin 1-Like (NRN1L)
Alternative Name:	NRN1L ( <a href="#">NRN1L Products</a> )

## Target Details

Background:	Full Gene Name: neuritin 1-like Synonyms: MGC118990,MGC118993,UNQ2446
Gene ID:	123904

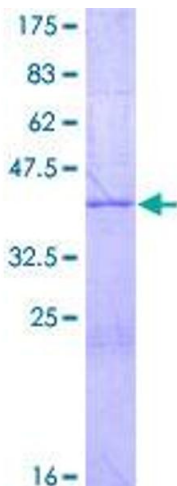
## Application Details

Application Notes:	Optimal working dilution should be determined by the investigator.
Comment:	Preparation method: in vitro, wheat germ expression system Product Quality tested by: 12.5% SDS-PAGE Stained with Coomassie Blue.
Restrictions:	For Research Use only

## Handling

Buffer:	50 mM Tris-HCl, 10 mM reduced Glutathione, pH =8.0 in the elution buffer.
Handling Advice:	Aliquot to avoid repeated freezing and thawing.
Storage:	-80 °C
Storage Comment:	Best use within three months from the date of receipt of this protein.

## Images



**Image 1.**