

Datasheet for ABIN1313046
NRP2 Protein (AA 621-715) (GST tag)



[Go to Product page](#)

1 Image

Overview

Quantity:	10 µg
Target:	NRP2
Protein Characteristics:	AA 621-715
Origin:	Human
Source:	Wheat germ
Protein Type:	Recombinant
Purification tag / Conjugate:	This NRP2 protein is labelled with GST tag.
Application:	Western Blotting (WB), ELISA, Affinity Purification (AP), Antibody Array (AA)

Product Details

Purpose:	NRP2 (Human) Recombinant Protein (Q02)
Sequence:	EEATECGENC SFEDDKDLQL PSGFNCNFDL LEEPCGWMYD HAKWLRRTTWA SSSSPNDRTF PDDRNFLRLQ SDSQREGQYA RLISPPVHLP RSPVC
Characteristics:	Human NRP2 partial ORF (NP_958436, 621 a.a. - 715 a.a.) recombinant protein with GST-tag at N-terminal.
Purification:	in vitro wheat germ expression system

Target Details

Target:	NRP2
Alternative Name:	NRP2 (NRP2 Products)

Target Details

Background:	Full Gene Name: neuropilin 2 Synonyms: MGC126574,NP2,NPN2,PRO2714,VEGF165R2
Gene ID:	8828
NCBI Accession:	NM_201279
Pathways:	Signaling Events mediated by VEGFR1 and VEGFR2, VEGFR1 Specific Signals

Application Details

Application Notes:	Optimal working dilution should be determined by the investigator.
Comment:	Preparation method: in vitro, wheat germ expression system Product Quality tested by: 12.5% SDS-PAGE Stained with Coomassie Blue.
Restrictions:	For Research Use only

Handling

Buffer:	50 mM Tris-HCl, 10 mM reduced Glutathione, pH =8.0 in the elution buffer.
Handling Advice:	Aliquot to avoid repeated freezing and thawing.
Storage:	-80 °C
Storage Comment:	Best use within three months from the date of receipt of this protein.

Images

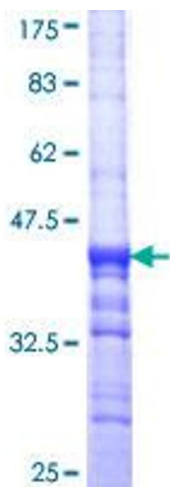


Image 1.