

Datasheet for ABIN1313060  
**NSD1 Protein (AA 2-109) (GST tag)**



[Go to Product page](#)

1 Image

Overview

Quantity:	10 µg
Target:	NSD1
Protein Characteristics:	AA 2-109
Origin:	Human
Source:	Wheat germ
Protein Type:	Recombinant
Purification tag / Conjugate:	This NSD1 protein is labelled with GST tag.
Application:	ELISA, Western Blotting (WB), Affinity Purification (AP), Antibody Array (AA)

Product Details

Purpose:	NSD1 (Human) Recombinant Protein (Q01)
Sequence:	DQTCELPRRN CLLPFSNPVN LDAPEDKDSP FGNGQSNFSE PLNGCTMQLS TVSGTSQNAY GQDSPSCYIP LRRLQLASM INVEYLNLSA DGSESFQDPE KSDSRAQT
Characteristics:	Human NSD1 partial ORF ( NP_071900, 2 a.a. - 109 a.a.) recombinant protein with GST-tag at N-terminal.
Purification:	in vitro wheat germ expression system

Target Details

Target:	NSD1
Alternative Name:	NSD1 ( <a href="#">NSD1 Products</a> )

## Target Details

Background:	Full Gene Name: nuclear receptor binding SET domain protein 1 Synonyms: ARA267,DKFZp666C163,FLJ10684,FLJ22263,FLJ44628,KMT3B,SOTOS,STO
Gene ID:	64324
NCBI Accession:	<a href="#">NM_022455</a>

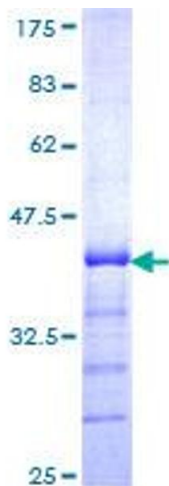
## Application Details

Application Notes:	Optimal working dilution should be determined by the investigator.
Comment:	Preparation method: in vitro, wheat germ expression system Product Quality tested by: 12.5% SDS-PAGE Stained with Coomassie Blue.
Restrictions:	For Research Use only

## Handling

Buffer:	50 mM Tris-HCl, 10 mM reduced Glutathione, pH =8.0 in the elution buffer.
Handling Advice:	Aliquot to avoid repeated freezing and thawing.
Storage:	-80 °C
Storage Comment:	Best use within three months from the date of receipt of this protein.

## Images



**Image 1.**