



[Go to Product page](#)

Datasheet for ABIN1313062

NSDHL Protein (AA 1-373) (GST tag)

1 Image

Overview

Quantity:	10 µg
Target:	NSDHL
Protein Characteristics:	AA 1-373
Origin:	Human
Source:	Wheat germ
Protein Type:	Recombinant
Purification tag / Conjugate:	This NSDHL protein is labelled with GST tag.
Application:	ELISA, Western Blotting (WB), Affinity Purification (AP), Antibody Array (AA)

Product Details

Purpose:	NSDHL (Human) Recombinant Protein (P01)
Sequence:	MEPAVSEPMR DQVARTHLTE DTPKVNADIE KVNQNQAKRC TVIGGSGFLG QHMVEQLLAR GYAVNVFDIQ QGFDNPQVRF FLGDLCSRQD LYPALKGVNT VFHCASPPPS SNNKELFYRV NYIGTKNVIE TCKEAGVQKL ILTSSASVIF EGVDIKNGTE DLPYAMKPID YYTETKILQE RAVLGANDPE KNFLTТАIRP HGIFGPRDPQ LVPILIEAAR NGKMKFVIGN GKNLVDFTFV ENVVHGHILA AEQLSRDSTL GGKAFHITND EPIPFWTFLS RILTGLNYEA PKYHIPYWVA YYLALLLSLL VMVISPVIQL QPTFTPMRVA LAGTFHYYS C ERAKKAMGYQ PLVTMDDAME RTVQSFRHLR RVK
Characteristics:	Human NSDHL full-length ORF (NP_057006.1, 1 a.a. - 373 a.a.) recombinant protein with GST-tag at N-terminal.
Purification:	in vitro wheat germ expression system

Target Details

Target:	NSDHL
Alternative Name:	NSDHL (NSDHL Products)
Background:	Full Gene Name: NAD(P) dependent steroid dehydrogenase-like Synonyms: H105E3,SDR31E1,XAP104
Gene ID:	50814
NCBI Accession:	NM_015922

Application Details

Application Notes:	Optimal working dilution should be determined by the investigator.
Comment:	Preparation method: in vitro, wheat germ expression system Product Quality tested by: 12.5% SDS-PAGE Stained with Coomassie Blue.
Restrictions:	For Research Use only

Handling

Buffer:	50 mM Tris-HCl, 10 mM reduced Glutathione, pH =8.0 in the elution buffer.
Handling Advice:	Aliquot to avoid repeated freezing and thawing.
Storage:	-80 °C
Storage Comment:	Best use within three months from the date of receipt of this protein.

Images

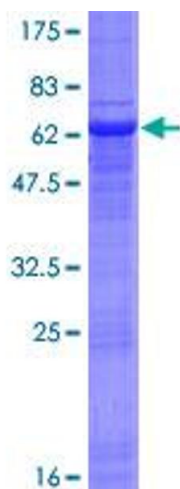


Image 1.