



[Go to Product page](#)

Datasheet for ABIN1313064

NSDHL Protein (AA 1-110) (GST tag)

1 Image

Overview

Quantity:	10 µg
Target:	NSDHL
Protein Characteristics:	AA 1-110
Origin:	Human
Source:	Wheat germ
Protein Type:	Recombinant
Purification tag / Conjugate:	This NSDHL protein is labelled with GST tag.
Application:	ELISA, Western Blotting (WB), Affinity Purification (AP), Antibody Array (AA)

Product Details

Purpose:	NSDHL (Human) Recombinant Protein (Q01)
Sequence:	MEPAVSEPMR DQVARTHLTE DTPKVNADIE KVNQNQAKRC TVIGGSGFLG QHMVEQLLAR GYAVNVFDIQ QGFDNPQVRF FLGDLCSRQD LYPALKGVNT VFHCASPPPS
Characteristics:	Human NSDHL partial ORF (NP_057006, 1 a.a. - 110 a.a.) recombinant protein with GST-tag at N-terminal.
Purification:	in vitro wheat germ expression system

Target Details

Target:	NSDHL
Alternative Name:	NSDHL (NSDHL Products)

Target Details

Background:	Full Gene Name: NAD(P) dependent steroid dehydrogenase-like Synonyms: H105E3,SDR31E1,XAP104
Gene ID:	50814
NCBI Accession:	NM_015922

Application Details

Application Notes:	Optimal working dilution should be determined by the investigator.
Comment:	Preparation method: in vitro, wheat germ expression system Product Quality tested by: 12.5% SDS-PAGE Stained with Coomassie Blue.
Restrictions:	For Research Use only

Handling

Buffer:	50 mM Tris-HCl, 10 mM reduced Glutathione, pH =8.0 in the elution buffer.
Handling Advice:	Aliquot to avoid repeated freezing and thawing.
Storage:	-80 °C
Storage Comment:	Best use within three months from the date of receipt of this protein.

Images

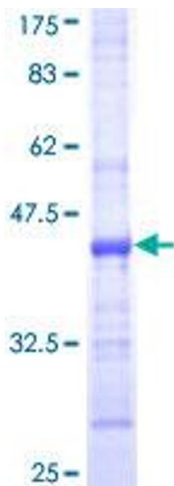


Image 1.