



[Go to Product page](#)

Datasheet for ABIN1313090

NT5C2 Protein (AA 1-561) (GST tag)

1 Image

Overview

Quantity:	10 µg
Target:	NT5C2
Protein Characteristics:	AA 1-561
Origin:	Human
Source:	Wheat germ
Protein Type:	Recombinant
Purification tag / Conjugate:	This NT5C2 protein is labelled with GST tag.
Application:	Western Blotting (WB), ELISA, Affinity Purification (AP), Antibody Array (AA)

Product Details

Purpose:	NT5C2 (Human) Recombinant Protein (P01)
Sequence:	MSTSWSDRLQ NAADMPANMD KHALKKYRRE AYHRVFNRS LAMEKIKCFG FDMDYTLAVY KSPEYESLGF ELTVERLVS I GYPQELLSFA YDSTFPTRGL VFDTLYGNLL KVDAYGNLLV CAHGFnFIRG PETREQYPNK FIQRDDTERF YILNTLFNLP ETYLLACLVD FFTNCPRYTS CETGFKDGD L FMSYRSMFQD VRDAVDWVHY KGSLKEKTVE NLEKYVVKDG KLP LLLSRMK EVGKVFLATN SDYKYTDKIM TYLFD FPHGP KPGSSHRPWQ SYFDLILVDA RKPLFFGEGT VLRQVDTKTG KLKIGTYTGP LQHGI VYSGG SSDTICDLLG AKGKDILYIG DHIFGDILKS KKRQGWRTFL VIPELAQELH VWTDKSSLFE ELQSLDIFLA ELYKHLDSSS NERPDISSIQ RRIKKVTHDM DMCYGMMSGSL FRSGSRQTLF ASQVMRYADL YAASFINLLY YPFSYLFRAA HVLMPHESTV EHTHVDINEM ESPLATRNR T SVDFKDTDYK RHQLTR SISE IKPPNLFPLA PQEITHCHDE DDDEEEEEEE E
Characteristics:	Human NT5C2 full-length ORF (AAH01595, 1 a.a. - 561 a.a.) recombinant protein with GST-tag

Product Details

at N-terminal.

Purification: in vitro wheat germ expression system

Target Details

Target: NT5C2

Alternative Name: NT5C2 ([NT5C2 Products](#))

Background: Full Gene Name: 5'-nucleotidase, cytosolic II
Synonyms: GMP,NT5B,PNT5,cN-II

Gene ID: 22978

Application Details

Application Notes: Optimal working dilution should be determined by the investigator.

Comment: Preparation method: in vitro, wheat germ expression system
Product Quality tested by: 12.5% SDS-PAGE Stained with Coomassie Blue.

Restrictions: For Research Use only

Handling

Buffer: 50 mM Tris-HCl, 10 mM reduced Glutathione, pH =8.0 in the elution buffer.

Handling Advice: Aliquot to avoid repeated freezing and thawing.

Storage: -80 °C

Storage Comment: Best use within three months from the date of receipt of this protein.

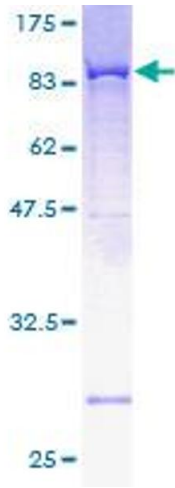


Image 1.