



[Go to Product page](#)

Datasheet for ABIN1313139

NUB1 Protein (AA 503-601) (GST tag)

1 Image

Overview

Quantity:	10 µg
Target:	NUB1
Protein Characteristics:	AA 503-601
Origin:	Human
Source:	Wheat germ
Protein Type:	Recombinant
Purification tag / Conjugate:	This NUB1 protein is labelled with GST tag.
Application:	ELISA, Western Blotting (WB), Affinity Purification (AP), Antibody Array (AA)

Product Details

Purpose:	NYREN18 (Human) Recombinant Protein (Q01)
Sequence:	GNVQLAAQTL AHNGGSLPPE LPLSPEDSLS PPATSPSDSA GTSSASTDED METEAVNEIL EDIPEHEEDY LDSTLEDEEI IIAEYLSYVE NRKSATKKN
Characteristics:	Human NYREN18 partial ORF (NP_057202.2, 503 a.a. - 601 a.a.) recombinant protein with GST-tag at N-terminal.
Purification:	in vitro wheat germ expression system

Target Details

Target:	NUB1
Alternative Name:	NUB1 (NUB1 Products)

Target Details

Background:	Full Gene Name: negative regulator of ubiquitin-like proteins 1 Synonyms: BS4,NUB1L,NYREN18
Gene ID:	51667
NCBI Accession:	NM_016118

Application Details

Application Notes:	Optimal working dilution should be determined by the investigator.
Comment:	Preparation method: in vitro, wheat germ expression system Product Quality tested by: 12.5% SDS-PAGE Stained with Coomassie Blue.
Restrictions:	For Research Use only

Handling

Buffer:	50 mM Tris-HCl, 10 mM reduced Glutathione, pH =8.0 in the elution buffer.
Handling Advice:	Aliquot to avoid repeated freezing and thawing.
Storage:	-80 °C
Storage Comment:	Best use within three months from the date of receipt of this protein.

Images

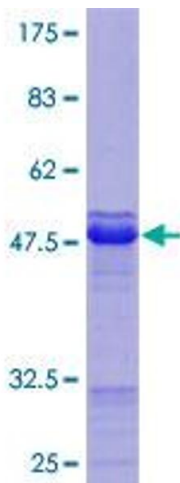


Image 1.