



[Go to Product page](#)

Datasheet for ABIN1313141

NUBP1 Protein (AA 1-320) (GST tag)

1 Image

Overview

Quantity:	10 µg
Target:	NUBP1
Protein Characteristics:	AA 1-320
Origin:	Human
Source:	Wheat germ
Protein Type:	Recombinant
Purification tag / Conjugate:	This NUBP1 protein is labelled with GST tag.
Application:	ELISA, Western Blotting (WB), Affinity Purification (AP), Antibody Array (AA)

Product Details

Purpose:	NUBP1 (Human) Recombinant Protein (P01)
Sequence:	MEEVPHDCPG ADSAQAGRGA SCQGCPNQL CASGAGATPD TAIEEIKEKM KTVKHKILVL SGKGGVGKST FSAHLAHLA EDENTQIAL DIDICGPSIP KIMGLEGEQV HQSGSGWSPV YVEDNLGVMS VGFLSSPDD AVIWRGPCKN GMIKQFLRDV DWGEVDYLIV DTPPGTSDEH LSVRYLATA HIDGAVIIT PQEVSLQDVR KEINFCRKVK LPIIGVVENM SGFICPKCKK ESQIFPPTTG GAELMCQDLE VPLLGRVPLD PLIGKNCCKG QSFFIDAPDS PATLAYRSII QRIQEFNLH QSKEENLISS
Characteristics:	Human NUBP1 full-length ORF (NP_002475.2, 1 a.a. - 320 a.a.) recombinant protein with GST-tag at N-terminal.
Purification:	in vitro wheat germ expression system

Target Details

Target:	NUBP1
Alternative Name:	NUBP1 (NUBP1 Products)
Background:	Full Gene Name: nucleotide binding protein 1 (MinD homolog, E. coli) Synonyms: MGC117406,MGC130052,MGC130053,NBP,NBP1
Gene ID:	4682
NCBI Accession:	NM_002484
Pathways:	Transition Metal Ion Homeostasis

Application Details

Application Notes:	Optimal working dilution should be determined by the investigator.
Comment:	Preparation method: in vitro, wheat germ expression system Product Quality tested by: 12.5% SDS-PAGE Stained with Coomassie Blue.
Restrictions:	For Research Use only

Handling

Buffer:	50 mM Tris-HCl, 10 mM reduced Glutathione, pH =8.0 in the elution buffer.
Handling Advice:	Aliquot to avoid repeated freezing and thawing.
Storage:	-80 °C
Storage Comment:	Best use within three months from the date of receipt of this protein.

Images

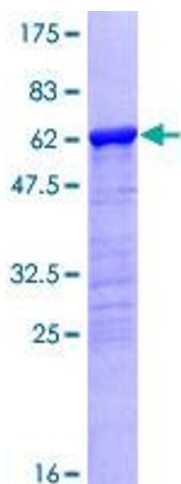


Image 1.