



Datasheet for ABIN1313153  
**NUCKS1 Protein (AA 1-243) (GST tag)**



[Go to Product page](#)

1 Image

Overview

Quantity:	10 µg
Target:	NUCKS1
Protein Characteristics:	AA 1-243
Origin:	Human
Source:	Wheat germ
Protein Type:	Recombinant
Purification tag / Conjugate:	This NUCKS1 protein is labelled with GST tag.
Application:	ELISA, Western Blotting (WB), Affinity Purification (AP), Antibody Array (AA)

Product Details

Purpose:	NUCKS1 (Human) Recombinant Protein (P01)
Sequence:	MSRPVRNRKV VDYSQFQESD DADEDYGRDS GPPTKKIRSS PREAKNKRRS GKNSQEDSED SEDKDVKTKK DDSHSAEDSE DEKEDHKHNRV QQRQAASKAA SKQREMLMED VGSEEEQEEE DEAPFQEKDS GSDDEFMED DDDSDYGSSK KKNKMMVKKS KPERKEKKMP KPRLKATVTP SPVKGKGGKVG RPTASKASKE KTPSPKEEDE EPESPPEKKT STSPPPEKSG DEGSEDEAPS GED
Characteristics:	Human NUCKS1 full-length ORF ( NP_073568.2, 1 a.a. - 243 a.a.) recombinant protein with GST-tag at N-terminal.
Purification:	in vitro wheat germ expression system

Target Details

Target:	NUCKS1
---------	--------

## Target Details

Alternative Name:	NUCKS1 ( <a href="#">NUCKS1 Products</a> )
Background:	Full Gene Name: nuclear casein kinase and cyclin-dependent kinase substrate 1 Synonyms: FLJ21480,FLJ32016,FLJ38536,JC7,NUCKS
Gene ID:	64710
NCBI Accession:	<a href="#">NM_022731</a>

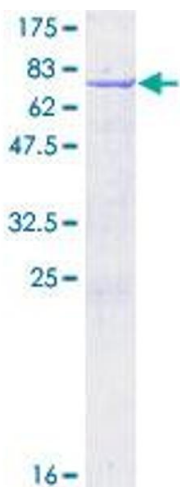
## Application Details

Application Notes:	Optimal working dilution should be determined by the investigator.
Comment:	Preparation method: in vitro, wheat germ expression system Product Quality tested by: 12.5% SDS-PAGE Stained with Coomassie Blue.
Restrictions:	For Research Use only

## Handling

Buffer:	50 mM Tris-HCl, 10 mM reduced Glutathione, pH =8.0 in the elution buffer.
Handling Advice:	Aliquot to avoid repeated freezing and thawing.
Storage:	-80 °C
Storage Comment:	Best use within three months from the date of receipt of this protein.

## Images



**Image 1.**