



[Go to Product page](#)

Datasheet for ABIN1313172

NUDT13 Protein (AA 1-263) (GST tag)

1 Image

Overview

Quantity:	10 µg
Target:	NUDT13
Protein Characteristics:	AA 1-263
Origin:	Human
Source:	Wheat germ
Protein Type:	Recombinant
Purification tag / Conjugate:	This NUDT13 protein is labelled with GST tag.
Application:	ELISA, Western Blotting (WB), Affinity Purification (AP), Antibody Array (AA)

Product Details

Purpose:	NUDT13 (Human) Recombinant Protein (P01)
Sequence:	MSLYCGIACR RKFFWCYRLL STYVTKTRYL FELKEDDDAC KKAQQTGAFY LFHSLAPLLQ TSAHQYLAPR HSLLLELERLL GKFGQDAQRI EDSVLIGCSE QQEAWFALDL GLDSSFSISA SLHKPEMETE LKGSFIELRK ALFQLNARDA SLLSTAQALL RWHDAHQFCS RSGQPTKKNV AGSKRVCPSN NIIYYPQIQV NLRELETAAW FSHDEVATAL KRKGPYTQQQ NGTFPFWLPP KLAISHQLIK EWVEKQTCSS LPA
Characteristics:	Human NUDT13 full-length ORF (AAH46173.2, 1 a.a. - 263 a.a.) recombinant protein with GST-tag at N-terminal.
Purification:	in vitro wheat germ expression system

Target Details

Target:	NUDT13
Alternative Name:	NUDT13 (NUDT13 Products)
Background:	Full Gene Name: nudix (nucleoside diphosphate linked moiety X)-type motif 13 Synonyms:
Gene ID:	25961

Application Details

Application Notes:	Optimal working dilution should be determined by the investigator.
Comment:	Preparation method: in vitro, wheat germ expression system Product Quality tested by: 12.5% SDS-PAGE Stained with Coomassie Blue.
Restrictions:	For Research Use only

Handling

Buffer:	50 mM Tris-HCl, 10 mM reduced Glutathione, pH =8.0 in the elution buffer.
Handling Advice:	Aliquot to avoid repeated freezing and thawing.
Storage:	-80 °C
Storage Comment:	Best use within three months from the date of receipt of this protein.

Images

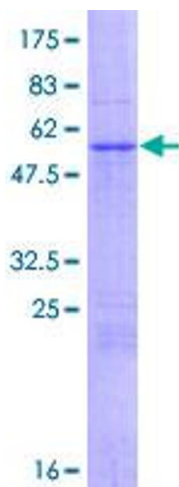


Image 1.