



[Go to Product page](#)

Datasheet for ABIN1313181  
**NUDT16L1 Protein (AA 1-211) (GST tag)**

1 Image

Overview

Quantity:	10 µg
Target:	NUDT16L1
Protein Characteristics:	AA 1-211
Origin:	Human
Source:	Wheat germ
Protein Type:	Recombinant
Purification tag / Conjugate:	This NUDT16L1 protein is labelled with GST tag.
Application:	ELISA, Western Blotting (WB), Affinity Purification (AP), Antibody Array (AA)

Product Details

Purpose:	NUDT16L1 (Human) Recombinant Protein (P01)
Sequence:	MSTAAVPELK QISRVEAMRL GPGWSHSCHA MLYAANPGQL FGRIPMRFSV LMQMRFDGLL GFPGGFVDRR FWSLEDGLNR VLGLGLGCLR LTEADYLSSH LTEGPHRVVA HLYARQLTLE QLHAVEISAV HSRDHGLEVL GLVRVPLYTQ KDRVGGFPNF LSNAFVSTAK CQLLFALKVL NMMPEEKLVE ALAAATEKQK KALEKLLPAS S
Characteristics:	Human NUDT16L1 full-length ORF ( NP_115725.1, 1 a.a. - 211 a.a.) recombinant protein with GST-tag at N-terminal.
Purification:	in vitro wheat germ expression system

Target Details

Target:	NUDT16L1
---------	----------

## Target Details

Alternative Name:	NUDT16L1 ( <a href="#">NUDT16L1 Products</a> )
Background:	Full Gene Name: nudix (nucleoside diphosphate linked moiety X)-type motif 16-like 1 Synonyms: MGC11275,SDOS
Gene ID:	84309
NCBI Accession:	<a href="#">NM_032349</a>

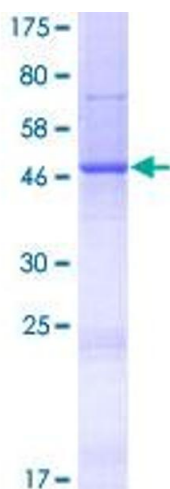
## Application Details

Application Notes:	Optimal working dilution should be determined by the investigator.
Comment:	Preparation method: in vitro, wheat germ expression system Product Quality tested by: 12.5% SDS-PAGE Stained with Coomassie Blue.
Restrictions:	For Research Use only

## Handling

Buffer:	50 mM Tris-HCl, 10 mM reduced Glutathione, pH =8.0 in the elution buffer.
Handling Advice:	Aliquot to avoid repeated freezing and thawing.
Storage:	-80 °C
Storage Comment:	Best use within three months from the date of receipt of this protein.

## Images



**Image 1.**