



[Go to Product page](#)

Datasheet for ABIN1313187

NUDT21 Protein (AA 144-211) (GST tag)

1 Image

Overview

| | |
|-------------------------------|---|
| Quantity: | 10 µg |
| Target: | NUDT21 |
| Protein Characteristics: | AA 144-211 |
| Origin: | Human |
| Source: | Wheat germ |
| Protein Type: | Recombinant |
| Purification tag / Conjugate: | This NUDT21 protein is labelled with GST tag. |
| Application: | ELISA, Western Blotting (WB), Affinity Purification (AP), Antibody Array (AA) |

Product Details

| | |
|------------------|---|
| Purpose: | NUDT21 (Human) Recombinant Protein (Q01) |
| Sequence: | CIGNWWRPNF EPPQYPYIPA HITKPKEHKK LFLVQLQEKA LFAVPKKNYKL VAAPLFELYD NAPGYGPI |
| Characteristics: | Human NUDT21 partial ORF (AAH01403.1, 144 a.a. - 211 a.a.) recombinant protein with GST-tag at N-terminal. |
| Purification: | in vitro wheat germ expression system |

Target Details

| | |
|-------------------|--|
| Target: | NUDT21 |
| Alternative Name: | NUDT21 (NUDT21 Products) |

Target Details

| | |
|-------------|--|
| Background: | Full Gene Name: nudix (nucleoside diphosphate linked moiety X)-type motif 21 Synonyms: CFIM25,CPSF5,DKFZp686H1588 |
| Gene ID: | 11051 |

Application Details

| | |
|--------------------|--|
| Application Notes: | Optimal working dilution should be determined by the investigator. |
| Comment: | Preparation method: in vitro, wheat germ expression system Product Quality tested by: 12.5% SDS-PAGE Stained with Coomassie Blue. |
| Restrictions: | For Research Use only |

Handling

| | |
|------------------|---|
| Buffer: | 50 mM Tris-HCl, 10 mM reduced Glutathione, pH =8.0 in the elution buffer. |
| Handling Advice: | Aliquot to avoid repeated freezing and thawing. |
| Storage: | -80 °C |
| Storage Comment: | Best use within three months from the date of receipt of this protein. |

Images

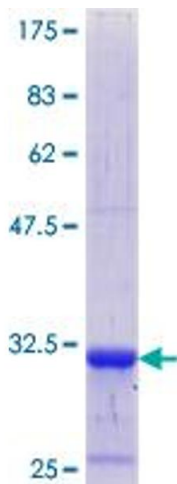


Image 1.