

Datasheet for ABIN1313206
NUF2 Protein (AA 1-464) (GST tag)



[Go to Product page](#)

1 Image

Overview

Quantity:	10 µg
Target:	NUF2
Protein Characteristics:	AA 1-464
Origin:	Human
Source:	Wheat germ
Protein Type:	Recombinant
Purification tag / Conjugate:	This NUF2 protein is labelled with GST tag.
Application:	ELISA, Western Blotting (WB), Affinity Purification (AP), Antibody Array (AA)

Product Details

Purpose:	CDCA1 (Human) Recombinant Protein (P01)
Sequence:	METLSFPRYN VAEIVIHIRN KILTGADGKN LTKNDLYPNP KPEVLHMIYM RALQIVYGIR LEHFYMMPVN SEVMYPHLMG GFLPFSNLVT HLDSFLPICR VNDFETADIL CPKAKRTSRF LSGIINFIHF REACRETYME FLWQYKSSAD KMQQLNAAHQ EALMKLERLD SVPVEEQEEF KQLSDGIQEL QQSLNQDFHQ KTIVLQEGNS QKKSNISEKT KRLNELKLSV VSLKEIQESL KTKIVDSPEK LKNYKEKMKD TVQKLKNARQ EVVEKYEIYG DSVDCLPSCQ LEVQLYQKKI QDLSDNREKL ASILKESLNL EDQIESDESE LKCLKTEENS FKRLMIVKKE KLATAQFKIN KKHEDVKQYK RTVIEDCNKV QEKRGAVYER VTTINQEIQK IKLGIQQLKD AAEREKLSQ EIFLNLKTAL EKYHDGIEKA AEDSYAKIDE KTAELKRKMF KMST
Characteristics:	Human CDCA1 full-length ORF (AAH08489, 1 a.a. - 464 a.a.) recombinant protein with GST-tag at N-terminal.

Product Details

Purification: in vitro wheat germ expression system

Target Details

Target: NUF2

Alternative Name: NUF2 ([NUF2 Products](#))

Background: Gene: NUF2, NDC80 kinetochore complex component, homolog (*S. cerevisiae*)
Synonyms: CDCA1, NUF2R

Gene ID: 83540

Pathways: [Maintenance of Protein Location](#)

Application Details

Application Notes: Optimal working dilution should be determined by the investigator.

Restrictions: For Research Use only

Handling

Buffer: 50 mM Tris-HCl, 10 mM reduced Glutathione, pH =8.0 in the elution buffer.

Handling Advice: Aliquot to avoid repeated freezing and thawing.

Storage: -80 °C

Storage Comment: Best use within three months from the date of receipt of this protein.

Images

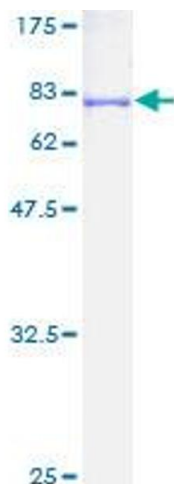


Image 1.