

Datasheet for ABIN1313269
NXF2 Protein (AA 95-168) (GST tag)



[Go to Product page](#)

1 Image

Overview

Quantity:	10 µg
Target:	NXF2
Protein Characteristics:	AA 95-168
Origin:	Human
Source:	Wheat germ
Protein Type:	Recombinant
Purification tag / Conjugate:	This NXF2 protein is labelled with GST tag.
Application:	Western Blotting (WB), Affinity Purification (AP), Antibody Array (AA), ELISA

Product Details

Purpose:	NXF2 (Human) Recombinant Protein (Q01)
Sequence:	DEIRITWRN RKPPERKMSQ NTQDGYTRNW FKVTIPYGIK YDKAWLMNSI QSHCSDRFTP VDFHYVRNRA CFFV
Characteristics:	Human NXF2 partial ORF (AAH15020.1, 95 a.a. - 168 a.a.) recombinant protein with GST-tag at N-terminal.
Purification:	in vitro wheat germ expression system

Target Details

Target:	NXF2
Alternative Name:	NXF2 (NXF2 Products)

Target Details

Background: Gene: nuclear RNA export factor 2
Synonyms: FLJ20416, TAPL-2

Gene ID: 56001

Application Details

Application Notes: Optimal working dilution should be determined by the investigator.

Restrictions: For Research Use only

Handling

Buffer: 50 mM Tris-HCl, 10 mM reduced Glutathione, pH =8.0 in the elution buffer.

Handling Advice: Aliquot to avoid repeated freezing and thawing.

Storage: -80 °C

Storage Comment: Best use within three months from the date of receipt of this protein.

Images

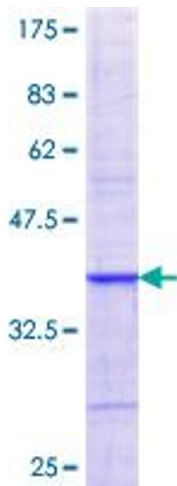


Image 1.