



[Go to Product page](#)

Datasheet for ABIN1313273

## NXF3 Protein (AA 1-100) (GST tag)

### 1 Image

#### Overview

Quantity:	10 µg
Target:	NXF3
Protein Characteristics:	AA 1-100
Origin:	Human
Source:	Wheat germ
Protein Type:	Recombinant
Purification tag / Conjugate:	This NXF3 protein is labelled with GST tag.
Application:	Western Blotting (WB), ELISA, Affinity Purification (AP), Antibody Array (AA)

#### Product Details

Purpose:	NXF3 (Human) Recombinant Protein (Q01)
Sequence:	MSLPSGHTTG HTDQVVQRRR RCWDIYQRRF SSRSEPVNPG MHSSSHQQQD GDAAMHGAHM DSPVRYTPYT ISPYNRKGSF RKQDQTHVNM EREQKPPERR
Characteristics:	Human NXF3 partial ORF ( NP_071335.1, 1 a.a. - 100 a.a.) recombinant protein with GST-tag at N-terminal.
Purification:	in vitro wheat germ expression system

#### Target Details

Target:	NXF3
Alternative Name:	NXF3 ( <a href="#">NXF3 Products</a> )

## Target Details

---

Background: Gene: nuclear RNA export factor 3

Gene ID: 56000

NCBI Accession: [NM\\_022052](#)

## Application Details

---

Application Notes: Optimal working dilution should be determined by the investigator.

Restrictions: For Research Use only

## Handling

---

Buffer: 50 mM Tris-HCl, 10 mM reduced Glutathione, pH =8.0 in the elution buffer.

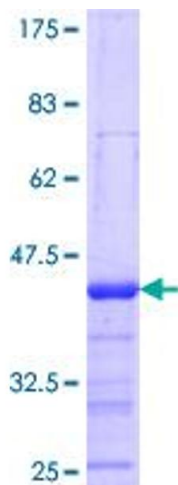
Handling Advice: Aliquot to avoid repeated freezing and thawing.

Storage: -80 °C

Storage Comment: Best use within three months from the date of receipt of this protein.

## Images

---



**Image 1.**