



[Go to Product page](#)

Datasheet for ABIN1313315

Obscurin Protein (OBSCN) (AA 1551-1649) (GST tag)

1 Image

Overview

Quantity:	10 µg
Target:	Obscurin (OBSCN)
Protein Characteristics:	AA 1551-1649
Origin:	Human
Source:	Wheat germ
Protein Type:	Recombinant
Purification tag / Conjugate:	This Obscurin protein is labelled with GST tag.
Application:	Affinity Purification (AP), Antibody Array (AA), ELISA, Western Blotting (WB)

Product Details

Purpose:	OBSCN (Human) Recombinant Protein (Q02)
Sequence:	KAGMGPYSSP SEQVLLGGPS HLAEEEEESQG RSAQPLPSTK TFAFQTQIQR GRFSVVRQCW EKASGRALAA KIIPYHPKDK TAVLREYEAL KGLRHPHLA
Characteristics:	Human OBSCN partial ORF (XP_290923, 1551 a.a. - 1649 a.a.) recombinant protein with GST-tag at N-terminal.
Purification:	in vitro wheat germ expression system

Target Details

Target:	Obscurin (OBSCN)
Alternative Name:	OBSCN (OBSCN Products)
Name:	

Target Details

Background: Full Gene Name: obscurin, cytoskeletal calmodulin and titin-interacting RhoGEF

Synonyms:

DKFZp666E245,FLJ14124,KIAA1556,KIAA1639,MGC120409,MGC120410,MGC120411,MGC120412,MGC138590,UNC89

Gene ID: 84033

NCBI [XM_290923](#)

Accession:

Pathways: [Neurotrophin Signaling Pathway](#)

Application Details

Application Notes: Optimal working dilution should be determined by the investigator.

Comment: Preparation method: in vitro, wheat germ expression system
Product Quality tested by: 12.5% SDS-PAGE Stained with Coomassie Blue.

Restrictions: For Research Use only

Handling

Buffer: 50 mM Tris-HCl, 10 mM reduced Glutathione, pH =8.0 in the elution buffer.

Handling Advice: Aliquot to avoid repeated freezing and thawing.

Storage: -80 °C

Storage Comment: Best use within three months from the date of receipt of this protein.

Images

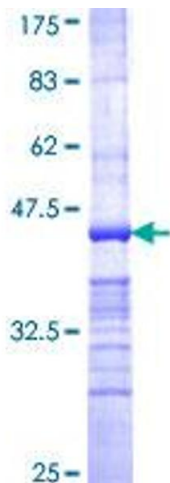


Image 1.