

Datasheet for ABIN1313326  
**OCRL Protein (AA 1-893) (GST tag)**



[Go to Product page](#)

1 Image

Overview

Quantity:	10 µg
Target:	OCRL
Protein Characteristics:	AA 1-893
Origin:	Human
Source:	Wheat germ
Protein Type:	Recombinant
Purification tag / Conjugate:	This OCRL protein is labelled with GST tag.
Application:	ELISA, Western Blotting (WB), Affinity Purification (AP), Antibody Array (AA)

Product Details

Purpose:	OCRL (Human) Recombinant Protein (P01)
Sequence:	MEPPLPVGAQ PLATVEGMEM KGPLREPCAL TLAQRNGQYE LIIQLHEKEQ HVQDIIPINS HFRVCQEAE TLLIDIASNS GCKIRVQGDW IRERRFEIPD EEHCLKFLSA VLAAQKAQSQ LLVPEQKDSS SWYQKLDTKD KPSVFSGLLG FEDNFSSMNL DKKINSQNP TGIHREPPPP PFSVNKMLPR EKEASNKEQP KVTNTRKLF VPNTQSGQRE GLIKHILAKR EKEYVNIQTF RFFVGTWNVN GQSPDSGLEP WLNCDPNPPD IYCIQFQELD LSTEAFFYFE SVKEQEW SMA VERGLHSKAK YKKVQLVRLV GMLLIFARK DQCRYIRDIA TETVGTGIMG KMGKGGVAV RFVFHNTTFC IVNSHLAAHV EDFERRNQDY KDICARMSFV VPNTQSLPQLN IMKHEVVIWL GDLNYRLGMP DANEVKS LIN KKDLQRLK F DQLNIQRTQK KAFVDFNEGE IKFIPTYKYD SKTDRWDSSG KCRVPAWCDR ILWRGTNVNQ LNYRSHMELK TSDHKPVSAL FHIGVKV VDE RRYRKVFEDS VRIMDRMEND FLPSLELSRR EYVFENVKFR QLQKEKFKQIS NNGQVPCHFS FIPKLNDSQY CKPWLRAEPF EGYLEPNETV DISLDVYVSK DSVTILNSGE DKIEDILVLH

## Product Details

---

LDRGKDYFLT ISGNYLPSCF GTSLEALCRM KRPIREVPVT KLIDLEKSLQ QMVPLDEGAS  
ERPLQVPKEI WLLVDHLFKY ACHQEDLFQT PGMQEELQI IDCLDTSIPE TIPGSNHSVA  
EALLIFLEAL PEPVICYELY QRCLDSAYDP RICRQVISQL PRCHRNVFRY LMAFLRELLK  
FSEYNSVNAN MIATLFTSLL LRPPNLMAR QTPSDRQRAI QFLLGFLGSG EED

Characteristics:	Human OCRL full-length ORF ( AAH94726.1, 1 a.a. - 893 a.a.) recombinant protein with GST-tag at N-terminal.
Purification:	in vitro wheat germ expression system

## Target Details

---

Target:	OCRL
Alternative Name:	OCRL ( <a href="#">OCRL Products</a> )
Background:	Full Gene Name: oculocerebrorenal syndrome of Lowe Synonyms: INPP5F,LOCR,NPHL2,OCRL1
Gene ID:	4952
Pathways:	<a href="#">Inositol Metabolic Process</a>

## Application Details

---

Application Notes:	Optimal working dilution should be determined by the investigator.
Comment:	Preparation method: in vitro, wheat germ expression system Product Quality tested by: 12.5% SDS-PAGE Stained with Coomassie Blue.
Restrictions:	For Research Use only

## Handling

---

Buffer:	50 mM Tris-HCl, 10 mM reduced Glutathione, pH =8.0 in the elution buffer.
Handling Advice:	Aliquot to avoid repeated freezing and thawing.
Storage:	-80 °C
Storage Comment:	Best use within three months from the date of receipt of this protein.

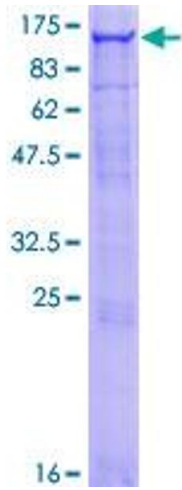


Image 1.