

Datasheet for ABIN1313350

OGFRL1 Protein (AA 1-450) (GST tag)



[Go to Product page](#)

1 Image

Overview

Quantity:	10 µg
Target:	OGFRL1
Protein Characteristics:	AA 1-450
Origin:	Human
Source:	Wheat germ
Protein Type:	Recombinant
Purification tag / Conjugate:	This OGFRL1 protein is labelled with GST tag.
Application:	ELISA, Western Blotting (WB), Affinity Purification (AP), Antibody Array (AA)

Product Details

Purpose:	OGFRL1 (Human) Recombinant Protein (P01)
Sequence:	MGNLLGGVSF REPTTVEDCD STWQTDSEPE PEEPGPGGGS EGPQEQSEQP AQPPEQAGGR PGASPAPDED AEAAGAEQGG DSTEATAKPK RSFYAARDLY KYRHQYPNFK DIRYQNDLSN LRFYKNKIPF KPDGVYIEEV LSKWKGDYEK LEHNHTYIQW LFPLREQGLN FYAKELTTYE IEEFKKTKEA IRRFLAYKM MLEFFGIKLT DKTGNVARAV NWQERFQHNLN ESQHNYLRIT RILKSLGELG YESFKSPLVK FILHEALVEN TIPNIKQSAL EYFVYTIRDR RERRKLLRFA QKHYPSENF IWGPPRKEQS EGSKAQKMSS PLASSHNSQT SMHKKAKDSK NSSSAVHLNS KTAEDKKVAP KEPVEETDRP SPEPSNEAAK PRNTEDSNAE NMNSQPEKTV TTPTEKKESV SPENNEEGGN DNQDNENPGN TNCHDVVLVQ
Characteristics:	Human OGFRL1 full-length ORF (AAH18688.1, 1 a.a. - 450 a.a.) recombinant protein with GST-tag at N-terminal.

Product Details

Purification: in vitro wheat germ expression system

Target Details

Target: OGFRL1

Alternative Name: OGFRL1 ([OGFRL1 Products](#))

Background: Full Gene Name: opioid growth factor receptor-like 1
Synonyms: FLJ21079,MGC102783,dJ331H24.1

Gene ID: 79627

Application Details

Application Notes: Optimal working dilution should be determined by the investigator.

Comment: Preparation method: in vitro, wheat germ expression system
Product Quality tested by: 12.5% SDS-PAGE Stained with Coomassie Blue.

Restrictions: For Research Use only

Handling

Buffer: 50 mM Tris-HCl, 10 mM reduced Glutathione, pH =8.0 in the elution buffer.

Handling Advice: Aliquot to avoid repeated freezing and thawing.

Storage: -80 °C

Storage Comment: Best use within three months from the date of receipt of this protein.

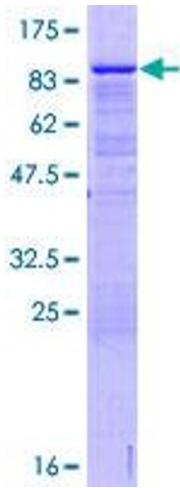


Image 1.