



[Go to Product page](#)

Datasheet for ABIN1313363

OLA1 Protein (AA 1-396) (GST tag)

1 Image

Overview

Quantity:	10 µg
Target:	OLA1
Protein Characteristics:	AA 1-396
Origin:	Human
Source:	Wheat germ
Protein Type:	Recombinant
Purification tag / Conjugate:	This OLA1 protein is labelled with GST tag.
Application:	ELISA, Western Blotting (WB), Affinity Purification (AP), Antibody Array (AA)

Product Details

Purpose:	OLA1 (Human) Recombinant Protein (P01)
Sequence:	MPPKKGGDGI KPPPIIGRFG TSLKIGIVGL PNVGKSTFFN VLTNSQASAE NFPFCTIDPN ESRVPVPDER FDFLCQYHKP ASKIPAFNLV VDIAGLVKGA HNGQGLGNAF LSHISACDGI FHLTRAFEDD DITHVEGSVD PIRDIEIHE ELQLKDEEMI GPIIDKLEKV AVRGGDKLKL PEYDIMCKVK SWVIDQKKPV RFYHDWNDKE IEVLNKHFL TSKPMVYLVN LSEKDYIRKK NKWLIKIKEW VDKYDPGALV IPFSGALELK LQELSAEERQ KYLEANMTQS ALPKIIKAGF AALQLEYFFT AGPDEVRAWT IRKGTKAPQA AGKIHTDFEK GFIMAEVMKY EDFKEEGSEN AVKAAGKYRQ QGRNYIVEDG DIIFFKFNTQ QPKKK
Characteristics:	Human OLA1 full-length ORF (NP_037473.3, 1 a.a. - 396 a.a.) recombinant protein with GST-tag at N-terminal.
Purification:	in vitro wheat germ expression system

Target Details

Target:	OLA1
Alternative Name:	OLA1 (OLA1 Products)
Background:	Full Gene Name: Obg-like ATPase 1 Synonyms: DKFZp313H1942,GTPBP9,PTD004
Gene ID:	29789
NCBI Accession:	NM_013341

Application Details

Application Notes:	Optimal working dilution should be determined by the investigator.
Comment:	Preparation method: in vitro, wheat germ expression system Product Quality tested by: 12.5% SDS-PAGE Stained with Coomassie Blue.
Restrictions:	For Research Use only

Handling

Buffer:	50 mM Tris-HCl, 10 mM reduced Glutathione, pH =8.0 in the elution buffer.
Handling Advice:	Aliquot to avoid repeated freezing and thawing.
Storage:	-80 °C
Storage Comment:	Best use within three months from the date of receipt of this protein.

Images

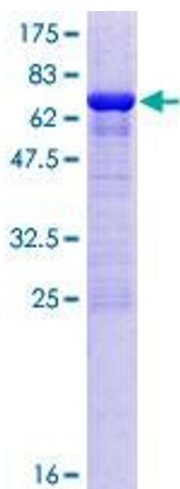


Image 1.