

Datasheet for ABIN1313375

OLFML2A Protein (AA 1-438) (GST tag)



[Go to Product page](#)

1 Image

Overview

Quantity:	10 µg
Target:	OLFML2A
Protein Characteristics:	AA 1-438
Origin:	Human
Source:	Wheat germ
Protein Type:	Recombinant
Purification tag / Conjugate:	This OLFML2A protein is labelled with GST tag.
Application:	ELISA, Western Blotting (WB), Affinity Purification (AP), Antibody Array (AA)

Product Details

Purpose:	OLFML2A (Human) Recombinant Protein (P01)
Sequence:	MSKRDKAGKD TARGKGKDIS KYGSVQKSFA DRGLPKPPKE KLLQVEKLRK ESGKGSFLQP TAKPRALAQQ QAVIRGFTYY KAGKQEVTEA VADNALQGTS WLEQLPPKVE GRSNSAEPNS AEQDEAEPRS SERVDLASGT PTSIPATTTT ATTTPTPTTS LLPTEPPSGP EVSSQGREAS CEGTLRAVDP PVRHHSYGRH EGAWMKDPAA RDDRIYVTNY YYGNSLVEFR NLENFKQGRW SNMYKLPYNW IGTGHVVYQG AFYYNRAFTK NIIKYDLRQR FVASWALLPD VVYEDTTPWK WRGHSDIDFA VDEGLWVIY PAVDDRDEAQ PEVIVLSRLD PGDLSVHRET TWKTRLRRNS YGNCFVLCGI LYAVDTYNQQ EGQVAYAFDT HTGTDARPQL PFLNEHAYTT QIDYNPKERV LYAWDNGHQL TYTLHFV
Characteristics:	Human OLFML2A full-length ORF (AAH54001, 1 a.a. - 438 a.a.) recombinant protein with GST-tag at N-terminal.

Product Details

Purification: in vitro wheat germ expression system

Target Details

Target: OLFML2A

Alternative Name: OLFML2A ([OLFML2A Products](#))

Background: Full Gene Name: olfactomedin-like 2A
Synonyms: FLJ00237,PRO34319

Gene ID: 169611

Application Details

Application Notes: Optimal working dilution should be determined by the investigator.

Comment: Preparation method: in vitro, wheat germ expression system
Product Quality tested by: 12.5% SDS-PAGE Stained with Coomassie Blue.

Restrictions: For Research Use only

Handling

Buffer: 50 mM Tris-HCl, 10 mM reduced Glutathione, pH =8.0 in the elution buffer.

Handling Advice: Aliquot to avoid repeated freezing and thawing.

Storage: -80 °C

Storage Comment: Best use within three months from the date of receipt of this protein.

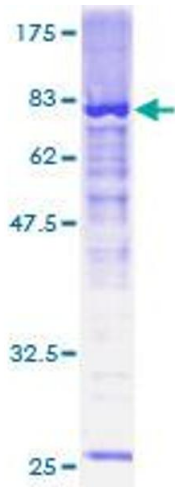


Image 1.