



[Go to Product page](#)

Datasheet for ABIN1313377

## OLFML3 Protein (AA 1-406) (GST tag)

### 1 Image

#### Overview

Quantity:	10 µg
Target:	OLFML3
Protein Characteristics:	AA 1-406
Origin:	Human
Source:	Wheat germ
Protein Type:	Recombinant
Purification tag / Conjugate:	This OLFML3 protein is labelled with GST tag.
Application:	ELISA, Western Blotting (WB), Affinity Purification (AP), Antibody Array (AA)

#### Product Details

Purpose:	OLFML3 (Human) Recombinant Protein (P01)
Sequence:	MGPSTPLLIL FLLSWGPLQ GQQHHLVEYM ERRLAAL EER LAQCQDQSSR HAAELRDFKN KMLPLLEVAE KEREALRTEA DTISGRVDRL EREVDYLETQ NPALPCVEFD EKVTGGPGTK GKGRRNEKYD MVTDCGYTIS QVRSMKILKR FGGPAGLWTK DPLGQTEKIY VLDGTQNDTA FVFPRLRDFT LAMAARKASR VRVFPWVGT GQLVYGGFLY FARRPPGRPG GGGEMENTLQ LIKFHLANRT VVDSSVFP AE GLIPPYGLTA DTYIDLADE EGLWAVYATR EDDRHLCLAK LDPQTL DTEQ QWDTPCPREN AEA AFVICGT LYVYNT RPA SRARIQCSFD ASGTLTPERA ALPYFPRRYG AHASLRYNPR ERQLYAWDDG YQIVYKLEMR KKEEEV
Characteristics:	Human OLFML3 full-length ORF ( NP_064575.1, 1 a.a. - 406 a.a.) recombinant protein with GST-tag at N-terminal.
Purification:	in vitro wheat germ expression system

## Target Details

Target:	OLFML3
Alternative Name:	OLFML3 ( <a href="#">OLFML3 Products</a> )
Background:	Full Gene Name: olfactomedin-like 3 Synonyms: HNOEL-iso,OLF44
Gene ID:	56944
NCBI Accession:	<a href="#">NM_020190</a>

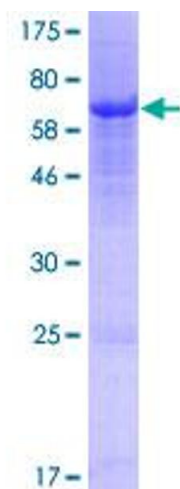
## Application Details

Application Notes:	Optimal working dilution should be determined by the investigator.
Comment:	Preparation method: in vitro, wheat germ expression system Product Quality tested by: 12.5% SDS-PAGE Stained with Coomassie Blue.
Restrictions:	For Research Use only

## Handling

Buffer:	50 mM Tris-HCl, 10 mM reduced Glutathione, pH =8.0 in the elution buffer.
Handling Advice:	Aliquot to avoid repeated freezing and thawing.
Storage:	-80 °C
Storage Comment:	Best use within three months from the date of receipt of this protein.

## Images



**Image 1.**