



[Go to Product page](#)

Datasheet for ABIN1313395  
**OMP Protein (AA 1-163) (GST tag)**

1 Image

Overview

Quantity:	10 µg
Target:	OMP
Protein Characteristics:	AA 1-163
Origin:	Human
Source:	Wheat germ
Protein Type:	Recombinant
Purification tag / Conjugate:	This OMP protein is labelled with GST tag.
Application:	ELISA, Western Blotting (WB), Affinity Purification (AP), Antibody Array (AA)

Product Details

Purpose:	OMP (Human) Recombinant Protein (P01)
Sequence:	MAEDRPQQPQ LDMPLVLDQG LTRQMRLRVE SLKQRGEKRQ DGEKLLQPAE SVYRLNFTQQ QRLQFERWNV VLDKPGKVTI TGTSQNWTPD LTNLMTRQLL DPTAIFWRKE DSDAIDWNEA DALEFGERLS DLAKIRKVMY FLVTFGEGVE PANLKASVVF NQL
Characteristics:	Human OMP full-length ORF ( NP_006180.1, 1 a.a. - 163 a.a.) recombinant protein with GST-tag at N-terminal.
Purification:	in vitro wheat germ expression system

Target Details

Target:	OMP
Alternative Name:	OMP ( <a href="#">OMP Products</a> )

## Target Details

Background: Full Gene Name: olfactory marker protein  
Synonyms:

Gene ID: 4975

NCBI Accession: [NM\\_006189](#)

## Application Details

Application Notes: Optimal working dilution should be determined by the investigator.

Comment: Preparation method: in vitro, wheat germ expression system  
Product Quality tested by: 12.5% SDS-PAGE Stained with Coomassie Blue.

Restrictions: For Research Use only

## Handling

Buffer: 50 mM Tris-HCl, 10 mM reduced Glutathione, pH =8.0 in the elution buffer.

Handling Advice: Aliquot to avoid repeated freezing and thawing.

Storage: -80 °C

Storage Comment: Best use within three months from the date of receipt of this protein.

## Images

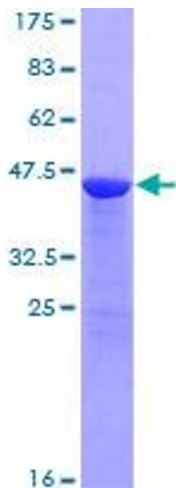


Image 1.