



[Go to Product page](#)

Datasheet for ABIN1313402

OPA3 Protein (AA 1-179) (GST tag)

1 Image

Overview

Quantity:	10 µg
Target:	OPA3
Protein Characteristics:	AA 1-179
Origin:	Human
Source:	Wheat germ
Protein Type:	Recombinant
Purification tag / Conjugate:	This OPA3 protein is labelled with GST tag.
Application:	Western Blotting (WB), ELISA, Affinity Purification (AP), Antibody Array (AA)

Product Details

Purpose:	OPA3 (Human) Recombinant Protein (P01)
Sequence:	MVVGAFPMMAK LLYLGIRQVS KPLANRIKEA ARRSEFFKTY ICLPPAQLYH WVEMRTKMRI MGFRGTVIKP LNEEAAAELG AELLGEATIF IVGGGCLVLE YWRHQAQQRH KEEEQRAAWN ALRDEVGHLA LALEALQAQV QAAPPQGALE ELRTELQEV R AQLCNPGRSA SHAVPASKK
Characteristics:	Human OPA3 full-length ORF (NP_079412.1, 1 a.a. - 179 a.a.) recombinant protein with GST-tag at N-terminal.
Purification:	in vitro wheat germ expression system

Target Details

Target:	OPA3
Alternative Name:	OPA3 (OPA3 Products)

Target Details

Background:	Full Gene Name: optic atrophy 3 (autosomal recessive, with chorea and spastic paraplegia) Synonyms: FLJ22187,FLJ25932,MGA3,MGC75494
Gene ID:	80207
NCBI Accession:	NM_025136

Application Details

Application Notes:	Optimal working dilution should be determined by the investigator.
Comment:	Preparation method: in vitro, wheat germ expression system Product Quality tested by: 12.5% SDS-PAGE Stained with Coomassie Blue.
Restrictions:	For Research Use only

Handling

Buffer:	50 mM Tris-HCl, 10 mM reduced Glutathione, pH =8.0 in the elution buffer.
Handling Advice:	Aliquot to avoid repeated freezing and thawing.
Storage:	-80 °C
Storage Comment:	Best use within three months from the date of receipt of this protein.

Images

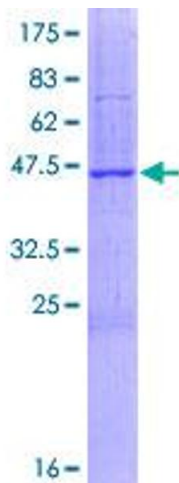


Image 1.