



[Go to Product page](#)

Datasheet for ABIN1313406

OPCML Protein (AA 1-344) (GST tag)

1 Image

Overview

Quantity:	10 µg
Target:	OPCML
Protein Characteristics:	AA 1-344
Origin:	Human
Source:	Wheat germ
Protein Type:	Recombinant
Purification tag / Conjugate:	This OPCML protein is labelled with GST tag.
Application:	ELISA, Western Blotting (WB), Affinity Purification (AP), Antibody Array (AA)

Product Details

Purpose:	OPCML (Human) Recombinant Protein (P01)
Sequence:	MGVCGYLFLP WKCLVVVSLR LLFLVPTGVP VRSGDATFPK AMDNVTVRQG ESATLRCTID DRVTRVAWLN RSTILYAGND KWSIDPRVII LVNTPTQYSI MIQNVDVYDE GPYTCSVQTD NHPKTSRVHL IVQVPPQIMN ISSDITVNEG SSVTLLCLAI GRSEPTVTWR HLSVKGGQGFV SEDEYLEISD IKRDQSGEYE CSALNDVAAP DVRKVKITVN YPPYISKAKN TGVSVGQKGI LSCEASAVPM AEFQWFKEET RLATGLDGMR IENKGRMSTL TFFNVSEKDY GNYTCVATNK LGNTNASITL YGPGAVIDGV NSASRALACL WLSGTLLAHF FIKF
Characteristics:	Human OPCML full-length ORF (AAH74742.1, 1 a.a. - 344 a.a.) recombinant protein with GST-tag at N-terminal.
Purification:	in vitro wheat germ expression system

Target Details

Target:	OPCML
Alternative Name:	OPCML (OPCML Products)
Background:	Full Gene Name: opioid binding protein/cell adhesion molecule-like Synonyms: IGLON1,OBCAM,OPCM
Gene ID:	4978

Application Details

Application Notes:	Optimal working dilution should be determined by the investigator.
Comment:	Preparation method: in vitro, wheat germ expression system Product Quality tested by: 12.5% SDS-PAGE Stained with Coomassie Blue.
Restrictions:	For Research Use only

Handling

Buffer:	50 mM Tris-HCl, 10 mM reduced Glutathione, pH =8.0 in the elution buffer.
Handling Advice:	Aliquot to avoid repeated freezing and thawing.
Storage:	-80 °C
Storage Comment:	Best use within three months from the date of receipt of this protein.

Images

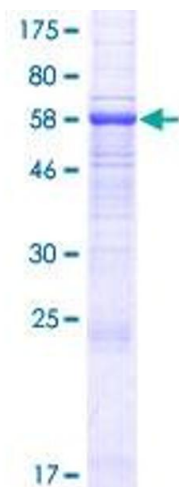


Image 1.