

Datasheet for ABIN1313424  
**OR10AG1 Protein (AA 1-301) (GST tag)**



[Go to Product page](#)

1 Image

Overview

Quantity:	25 µg
Target:	OR10AG1
Protein Characteristics:	AA 1-301
Origin:	Human
Source:	Wheat germ
Protein Type:	Recombinant
Purification tag / Conjugate:	This OR10AG1 protein is labelled with GST tag.
Application:	ELISA, Western Blotting (WB), Affinity Purification (AP), Antibody Array (AA)

Product Details

Purpose:	OR10AG1 (Human) Recombinant Protein (P01)
Sequence:	MEFVLLGFSD IPNLHWMLFS IFLLMYLMIL MCNGIILLI KIHPALQTPM YFFLSNFSLI EICYVTIIIP RMLMDIWTQK GNISLFACAT QMCFLLMLGG TECLLLTVMA YDRYVAICKP LQYPLVMNHK VCIQLIIASW TITIPVVIGE TCQIFLLPFC GTNTINHFFC DIPPILKLAC GNIFVNEITV HVVAVVFITV PFLIVVSYG KIISNILKLS SARGKAKAFS TCSSHLIIVI LFFGAGTITY LQPKPHQFQR MGKLIISLFYT ILIPTLNPII YTLRNKDIMV ALRKLAKLL T
Characteristics:	Human OR10AG1 full-length ORF ( NP_001005491.1, 1 a.a. - 301 a.a.) recombinant protein with GST-tag at N-terminal.
Purification:	in vitro wheat germ expression system

## Target Details

Target:	OR10AG1
Alternative Name:	OR10AG1 ( <a href="#">OR10AG1 Products</a> )
Background:	Full Gene Name: olfactory receptor, family 10, subfamily AG, member 1 Synonyms: OR11-160
Gene ID:	282770
NCBI Accession:	<a href="#">NM_001005491</a>

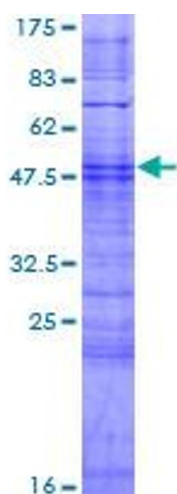
## Application Details

Application Notes:	Optimal working dilution should be determined by the investigator.
Comment:	Preparation method: in vitro, wheat germ expression system Product Quality tested by: 12.5% SDS-PAGE Stained with Coomassie Blue.
Restrictions:	For Research Use only

## Handling

Buffer:	50 mM Tris-HCl, 10 mM reduced Glutathione, pH =8.0 in the elution buffer.
Handling Advice:	Aliquot to avoid repeated freezing and thawing.
Storage:	-80 °C
Storage Comment:	Best use within three months from the date of receipt of this protein.

## Images



**Image 1.**