

Datasheet for ABIN1313425  
**OR10G3 Protein (AA 1-313) (GST tag)**



[Go to Product page](#)

1 Image

Overview

Quantity:	25 µg
Target:	OR10G3
Protein Characteristics:	AA 1-313
Origin:	Human
Source:	Wheat germ
Protein Type:	Recombinant
Purification tag / Conjugate:	This OR10G3 protein is labelled with GST tag.
Application:	ELISA, Western Blotting (WB), Affinity Purification (AP), Antibody Array (AA)

Product Details

Purpose:	OR10G3 (Human) Recombinant Protein (P01)
Sequence:	MERINSTLLT AFILTGIPYP LRLRTLFFVF FFLIYILTQL GNLLILITVW ADPRLHARPM YIFLGVLSVI DMSISSIIVP RLMMNFTLGV KPIPFGGCVA QLYFYHFLGS TQCFLYTLMA YDRYLAICQP LRYPVLM TAK LSALLVAGAW MAGSIHGALQ AILTFRLPYC GPNQVDYFFC DIPAVLRLAC ADTTVNELVT FVDIGVVAS CFSLILLSYI QIIQAILRIH TADGRRRAFS TCGAHVTWVT VYYVPCAFIY LRPETNSPLD GAAALVPTAI TPFLNPLIYT LRNQEVLKAL KRMLRSPRTP SEV
Characteristics:	Human OR10G3 full-length ORF ( NP_001005465.1, 1 a.a. - 313 a.a.) recombinant protein with GST-tag at N-terminal.
Purification:	in vitro wheat germ expression system

## Target Details

Target:	OR10G3
Alternative Name:	OR10G3 ( <a href="#">OR10G3 Products</a> )
Background:	Full Gene Name: olfactory receptor, family 10, subfamily G, member 3 Synonyms: OR14-40
Gene ID:	26533
NCBI Accession:	<a href="#">NM_001005465</a>

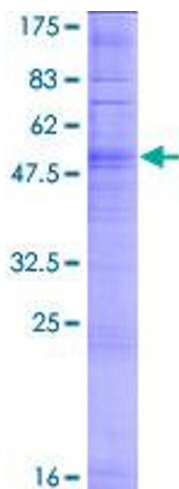
## Application Details

Application Notes:	Optimal working dilution should be determined by the investigator.
Comment:	Preparation method: in vitro, wheat germ expression system Product Quality tested by: 12.5% SDS-PAGE Stained with Coomassie Blue.
Restrictions:	For Research Use only

## Handling

Buffer:	50 mM Tris-HCl, 10 mM reduced Glutathione, pH =8.0 in the elution buffer.
Handling Advice:	Aliquot to avoid repeated freezing and thawing.
Storage:	-80 °C
Storage Comment:	Best use within three months from the date of receipt of this protein.

## Images



**Image 1.**