



[Go to Product page](#)

Datasheet for ABIN1313426

## OR10G8 Protein (AA 1-311) (GST tag)

### 1 Image

#### Overview

Quantity:	25 µg
Target:	OR10G8
Protein Characteristics:	AA 1-311
Origin:	Human
Source:	Wheat germ
Protein Type:	Recombinant
Purification tag / Conjugate:	This OR10G8 protein is labelled with GST tag.
Application:	ELISA, Western Blotting (WB), Affinity Purification (AP), Antibody Array (AA)

#### Product Details

Purpose:	OR10G8 (Human) Recombinant Protein (P01)
Sequence:	MSNASLLTAF ILMGLPHAPA LDAPLFGVFL VVYVLTVLGN LLILLVIRVD SHLHTTMYFF LTNLSFIDMW FSTVTVPKLL MTLVFPSTGRA ISFHSCMAQL YFFHFLGGTE CFLYRVMSCD RYLAISYPLR YTSMMTGRSC TLLATSTWLS GSLHSAVQAI LTFHLPYCGP NWIQHYLCDA PPILKLACAD TSAIETVIFV TVGIVASGCF VLIVLSYVSI VCSILIRITS EGKHRAFQTC ASHCIVLFCF FGPGLFIYLR PGRKAVDGV VAVFYTVLTP LLNPVVYTLR NKEVKKALLK LKDKVAHSQS K
Characteristics:	Human OR10G8 full-length ORF ( NP_001004464.1, 1 a.a. - 311 a.a.) recombinant protein with GST-tag at N-terminal.
Purification:	in vitro wheat germ expression system

## Target Details

Target:	OR10G8
Alternative Name:	OR10G8 ( <a href="#">OR10G8 Products</a> )
Background:	Full Gene Name: olfactory receptor, family 10, subfamily G, member 8 Synonyms: OR11-274,OR11-282
Gene ID:	219869
NCBI Accession:	<a href="#">NM_001004464</a>

## Application Details

Application Notes:	Optimal working dilution should be determined by the investigator.
Comment:	Preparation method: in vitro, wheat germ expression system Product Quality tested by: 12.5% SDS-PAGE Stained with Coomassie Blue.
Restrictions:	For Research Use only

## Handling

Buffer:	50 mM Tris-HCl, 10 mM reduced Glutathione, pH =8.0 in the elution buffer.
Handling Advice:	Aliquot to avoid repeated freezing and thawing.
Storage:	-80 °C
Storage Comment:	Best use within three months from the date of receipt of this protein.

## Images

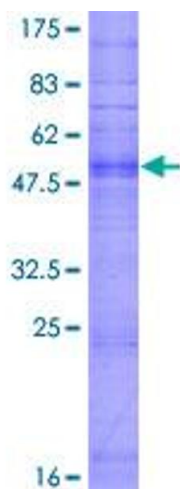


Image 1.