

Datasheet for ABIN1313432  
**Olfactory Receptor, Family 10, Subfamily K, Member 2 (OR10K2) (AA 1-312) protein (GST tag)**



[Go to Product page](#)

1 Image

Overview

Quantity:	25 µg
Target:	Olfactory Receptor, Family 10, Subfamily K, Member 2 (OR10K2)
Protein Characteristics:	AA 1-312
Origin:	Human
Source:	Wheat germ
Protein Type:	Recombinant
Purification tag / Conjugate:	GST tag
Application:	ELISA, Western Blotting (WB), Affinity Purification (AP), Antibody Array (AA)

Product Details

Purpose:	OR10K2 (Human) Recombinant Protein (P01)
Sequence:	MERVNETVVR EVIFLGFSSL ARLQQLL FVI FLLLYLFTLG TNAIISTIV LDRALHIPMY FFLAILSCSE ICYTFIIVPK MLVDLLSQKK TISFLGCAIQ MFSFLFLGCS HSFLAVMGY DRYIAICNPL RYSVLMGHGV CMGLVAAACA CGFTVAQIIT SLVFHLPFYS SNQLHHFFCD IAPVLKLASH HNHFSQIVIF MLCTLVLAIP LLLILVSYVH ILSAILQFPS TLGRCKAFST CVSHLIIVTV HYGCASFIYL RPQSNYSSSQ DALISVSYTI ITPLFNPMIY SLRNKEFKSA LCKIVRRTIS LL
Characteristics:	Human OR10K2 full-length ORF ( NP_001004476.1, 1 a.a. - 312 a.a.) recombinant protein with GST-tag at N-terminal.
Purification:	in vitro wheat germ expression system

## Target Details

Target:	Olfactory Receptor, Family 10, Subfamily K, Member 2 (OR10K2)
Alternative Name:	OR10K2 ( <a href="#">OR10K2 Products</a> )
Background:	Full Gene Name: olfactory receptor, family 10, subfamily K, member 2 Synonyms: OR1-4
Gene ID:	391107
NCBI Accession:	<a href="#">NM_001004476</a>

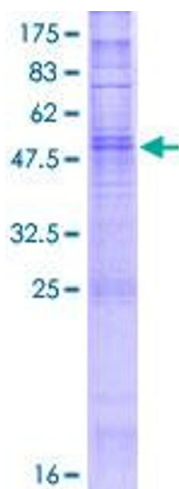
## Application Details

Application Notes:	Optimal working dilution should be determined by the investigator.
Comment:	Preparation method: in vitro, wheat germ expression system Product Quality tested by: 12.5% SDS-PAGE Stained with Coomassie Blue.
Restrictions:	For Research Use only

## Handling

Buffer:	50 mM Tris-HCl, 10 mM reduced Glutathione, pH =8.0 in the elution buffer.
Handling Advice:	Aliquot to avoid repeated freezing and thawing.
Storage:	-80 °C
Storage Comment:	Best use within three months from the date of receipt of this protein.

## Images



**Image 1.**