



[Go to Product page](#)

Datasheet for ABIN1313433

## OR10P1 Protein (AA 1-313) (GST tag)

### 1 Image

#### Overview

Quantity:	25 µg
Target:	OR10P1
Protein Characteristics:	AA 1-313
Origin:	Human
Source:	Wheat germ
Protein Type:	Recombinant
Purification tag / Conjugate:	This OR10P1 protein is labelled with GST tag.
Application:	ELISA, Western Blotting (WB), Affinity Purification (AP), Antibody Array (AA)

#### Product Details

Purpose:	OR10P1 (Human) Recombinant Protein (P01)
Sequence:	MAGENHTTLP EFLLLGFSDL KALQGPLFWV VLLVYLVTLT GNSLIILLTQ VSPALHSPMY FFLRQLSVVE LFYTTDIVPR TLANLGSPHP QAISFQGCAA QMYVFIVLGI SECCLLTAMA YDRYVAICQP LRYSTLLSPR ACMAMVGTSW LTGIITATTH ASLIFSLPFR SHPIIPHFLC DILPVLRLAS AGKHRSEISV MTATIVFIMI PFSLIVTSYI RILGAILAMA STQSRKRVFS TCSSHLLVVS LFFGTASITY IRPQAGSSVT TDRVLSLFYT VITPMLNPII YTLRNKDVERR ALRHLVKRQR PSP
Characteristics:	Human OR10P1 full-length ORF ( NP_996782.1, 1 a.a. - 313 a.a.) recombinant protein with GST-tag at N-terminal.
Purification:	in vitro wheat germ expression system

## Target Details

Target:	OR10P1
Alternative Name:	OR10P1 ( <a href="#">OR10P1 Products</a> )
Background:	Full Gene Name: olfactory receptor, family 10, subfamily P, member 1 Synonyms: OR10P1P,OR10P2P,OR10P3P,OR12-7,OST701
Gene ID:	121130
NCBI Accession:	<a href="#">NM_206899</a>

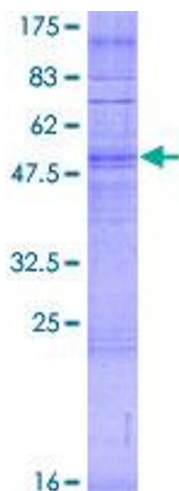
## Application Details

Application Notes:	Optimal working dilution should be determined by the investigator.
Comment:	Preparation method: in vitro, wheat germ expression system Product Quality tested by: 12.5% SDS-PAGE Stained with Coomassie Blue.
Restrictions:	For Research Use only

## Handling

Buffer:	50 mM Tris-HCl, 10 mM reduced Glutathione, pH =8.0 in the elution buffer.
Handling Advice:	Aliquot to avoid repeated freezing and thawing.
Storage:	-80 °C
Storage Comment:	Best use within three months from the date of receipt of this protein.

## Images



**Image 1.**