



[Go to Product page](#)

Datasheet for ABIN1313436

OR10T2 Protein (AA 1-314) (GST tag)

1 Image

Overview

Quantity:	25 µg
Target:	OR10T2
Protein Characteristics:	AA 1-314
Origin:	Human
Source:	Wheat germ
Protein Type:	Recombinant
Purification tag / Conjugate:	This OR10T2 protein is labelled with GST tag.
Application:	ELISA, Western Blotting (WB), Affinity Purification (AP), Antibody Array (AA)

Product Details

Purpose:	OR10T2 (Human) Recombinant Protein (P01)
Sequence:	MRGFNKTTVV TQFILVGFSS LGELQLLLFV IFLLLYLTIL VANVTIMAVI RFSWTLHTPM YGFLFILSFS ESCYTFVIIP QLLVHLLSDT KTISFMACAT QLFFFLGFAC TNCLLIAVMG YDRYVAICHP LRYTLIINKR LGLELISLSG ATGFFIALVA TNLICDMRFC GPNRVNHYFC DMAPVIKLAC TDTHVKELAL FLSILVIMV PFLILISYG FIVNTILKIP SAEGKKAFVT CASHLTVVVFV HYGCASIIYL RPKSKSASDK DQLVAVTYTV VTPLLNPLVY SLRNKEVKTA LKRVLGMPVA TKMS
Characteristics:	Human OR10T2 full-length ORF (NP_001004475.1, 1 a.a. - 314 a.a.) recombinant protein with GST-tag at N-terminal.
Purification:	in vitro wheat germ expression system

Target Details

Target:	OR10T2
Alternative Name:	OR10T2 (OR10T2 Products)
Background:	Full Gene Name: olfactory receptor, family 10, subfamily T, member 2 Synonyms: OR1-3
Gene ID:	128360
NCBI Accession:	NM_001004475

Application Details

Application Notes:	Optimal working dilution should be determined by the investigator.
Comment:	Preparation method: in vitro, wheat germ expression system Product Quality tested by: 12.5% SDS-PAGE Stained with Coomassie Blue.
Restrictions:	For Research Use only

Handling

Buffer:	50 mM Tris-HCl, 10 mM reduced Glutathione, pH =8.0 in the elution buffer.
Handling Advice:	Aliquot to avoid repeated freezing and thawing.
Storage:	-80 °C
Storage Comment:	Best use within three months from the date of receipt of this protein.

Images

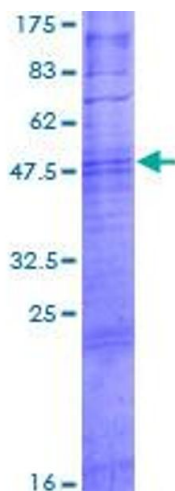


Image 1.