

Datasheet for ABIN1313437

OR10X1 Protein (AA 1-309) (GST tag)



[Go to Product page](#)

1 Image

Overview

Quantity:	10 µg
Target:	OR10X1
Protein Characteristics:	AA 1-309
Origin:	Human
Source:	Wheat germ
Protein Type:	Recombinant
Purification tag / Conjugate:	This OR10X1 protein is labelled with GST tag.
Application:	ELISA, Western Blotting (WB), Affinity Purification (AP), Antibody Array (AA)

Product Details

Purpose:	OR10X1 (Human) Recombinant Protein (P01)
Sequence:	MKINQTLKE FILVGFSVYP HVQTFLFVVF FCLYLLTLAG NLIIMGLTWV DRSLHTPMYL FLSALSFSET CYLTIVPKM LEDLLAKDRS ISVTGCSLQM CFFLGLGGTN CIILTMGYD RFLAICNPLR YPLLMTNIVC GQLVASACTA GFFISLTETA LIFRDSFCRP NLVKHFFCHM LAVIRLSCID SNHTEFIITL ISVSGLLGTL LLIILTDVFI ISTVLRIPSA EGKQKAFTTC ASHLTVIIH FGFASIVYLK PEASGDDTLI AVPYTVITPF LSPIIFSLRN KDMKNAFRRM MGNTVALKK
Characteristics:	Human OR10X1 full-length ORF (ENSP00000335495, 1 a.a. - 309 a.a.) recombinant protein with GST-tag at N-terminal.
Purification:	in vitro wheat germ expression system

Target Details

Target:	OR10X1
Alternative Name:	OR10X1 (OR10X1 Products)
Background:	Full Gene Name: olfactory receptor, family 10, subfamily X, member 1 Synonyms: OR1-13,OR1-14,OR10X1P
Gene ID:	128367

Application Details

Application Notes:	Optimal working dilution should be determined by the investigator.
Comment:	Preparation method: in vitro, wheat germ expression system Product Quality tested by: 12.5% SDS-PAGE Stained with Coomassie Blue.
Restrictions:	For Research Use only

Handling

Buffer:	50 mM Tris-HCl, 10 mM reduced Glutathione, pH =8.0 in the elution buffer.
Handling Advice:	Aliquot to avoid repeated freezing and thawing.
Storage:	-80 °C
Storage Comment:	Best use within three months from the date of receipt of this protein.

Images

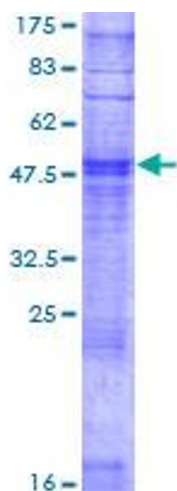


Image 1.