



[Go to Product page](#)

Datasheet for ABIN1313440

## OR11A1 Protein (AA 1-315) (GST tag)

### 1 Image

#### Overview

Quantity:	25 µg
Target:	OR11A1
Protein Characteristics:	AA 1-315
Origin:	Human
Source:	Wheat germ
Protein Type:	Recombinant
Purification tag / Conjugate:	This OR11A1 protein is labelled with GST tag.
Application:	ELISA, Western Blotting (WB), Affinity Purification (AP), Antibody Array (AA)

#### Product Details

Purpose:	OR11A1 (Human) Recombinant Protein (P01)
Sequence:	MEIVSTGNET ITEFVLLGFY DIPELHFLFF IVFTAVYVFI IIGNMLIIVA VVSSQRLHKP MYIFLANLSF LDILYTSAVM PKMLEGFLQE ATISVAGCLL QFFIFGSLAT AECLLLAVMA YDRYLAICY LHYPLLMGPR RYMGLVTTW LSGFVVDGLV VALVAQLRFC GPNHIDQFVC DFMLFVGLAC SDPRVAQVTT LILSVFCLTI PFGLILTSYA RIVVAVLRVP AGASRRRAFS TCSSHLAVVT TFYGTLMIFY VAPSAVHSQL LSKVFSLLYT VVTPLFNPVI YTMRNKEVHQ ALRKILCIKQ TETLD
Characteristics:	Human OR11A1 full-length ORF ( NP_039225.1, 1 a.a. - 315 a.a.) recombinant protein with GST-tag at N-terminal.
Purification:	in vitro wheat germ expression system

## Target Details

Target:	OR11A1
Alternative Name:	OR11A1 ( <a href="#">OR11A1 Products</a> )
Background:	Full Gene Name: olfactory receptor, family 11, subfamily A, member 1 Synonyms: OR11A2,dJ994E9.6,hs6M1-18
Gene ID:	26531
NCBI Accession:	<a href="#">NM_013937</a>

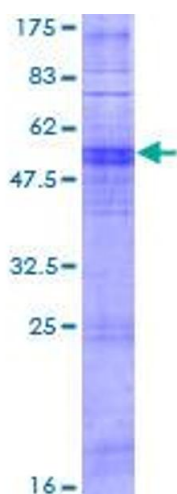
## Application Details

Application Notes:	Optimal working dilution should be determined by the investigator.
Comment:	Preparation method: in vitro, wheat germ expression system Product Quality tested by: 12.5% SDS-PAGE Stained with Coomassie Blue.
Restrictions:	For Research Use only

## Handling

Buffer:	50 mM Tris-HCl, 10 mM reduced Glutathione, pH =8.0 in the elution buffer.
Handling Advice:	Aliquot to avoid repeated freezing and thawing.
Storage:	-80 °C
Storage Comment:	Best use within three months from the date of receipt of this protein.

## Images



**Image 1.**