

Datasheet for ABIN1313441

OR11G2 Protein (AA 1-311) (GST tag)



[Go to Product page](#)

1 Image

Overview

Quantity:	25 µg
Target:	OR11G2
Protein Characteristics:	AA 1-311
Origin:	Human
Source:	Wheat germ
Protein Type:	Recombinant
Purification tag / Conjugate:	This OR11G2 protein is labelled with GST tag.
Application:	ELISA, Western Blotting (WB), Affinity Purification (AP), Antibody Array (AA)

Product Details

Purpose:	OR11G2 (Human) Recombinant Protein (P01)
Sequence:	MKIFNSPNS STFTGFILLG FPCPREGQIL LFVLFVWVYL LTLMGNGSII CAVHWDQRLH APMYILLANF SFLEICYVTS TVPSMLANFL SDTKIISFSG CFLQFYFFFS LGSTECFFLA VMAFDRLAI CRPLRYPTIM TRRLCTNLVV NCWVLGFIWF LIPIVNISQM SFCGSRIIDH FLCDPAPLLT LTCKKGPVIE LVFSVLSPLP VFMLFLFIVG SYALVVRAVL RVPSAAGRK AFSTCGSHLA VVSLFYGSVL VMYGSPPSKN EAGKQKTVTL FYSVVTPLL N PVIYSLRNKD MRKALKKFWG T
Characteristics:	Human OR11G2 full-length ORF (Q8NGC1, 1 a.a. - 311 a.a.) recombinant protein with GST-tag at N-terminal.
Purification:	in vitro wheat germ expression system

Target Details

Target:	OR11G2
Alternative Name:	OR11G2 (OR11G2 Products)
Background:	Full Gene Name: olfactory receptor, family 11, subfamily G, member 2 Synonyms: OR14-34
Gene ID:	390439
UniProt:	Q8NGC1

Application Details

Application Notes:	Optimal working dilution should be determined by the investigator.
Comment:	Preparation method: in vitro, wheat germ expression system Product Quality tested by: 12.5% SDS-PAGE Stained with Coomassie Blue.
Restrictions:	For Research Use only

Handling

Buffer:	50 mM Tris-HCl, 10 mM reduced Glutathione, pH =8.0 in the elution buffer.
Handling Advice:	Aliquot to avoid repeated freezing and thawing.
Storage:	-80 °C
Storage Comment:	Best use within three months from the date of receipt of this protein.

Images

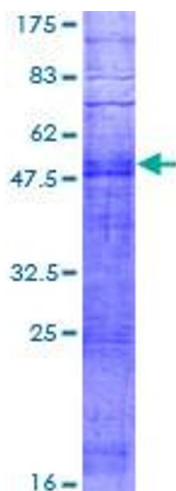


Image 1.