



[Go to Product page](#)

Datasheet for ABIN1313444

OR11L1 Protein (AA 1-322) (GST tag)

1 Image

Overview

Quantity:	25 µg
Target:	OR11L1
Protein Characteristics:	AA 1-322
Origin:	Human
Source:	Wheat germ
Protein Type:	Recombinant
Purification tag / Conjugate:	This OR11L1 protein is labelled with GST tag.
Application:	ELISA, Western Blotting (WB), Affinity Purification (AP), Antibody Array (AA)

Product Details

Purpose:	OR11L1 (Human) Recombinant Protein (P01)
Sequence:	MEPQNTSTVT NFQLLGFQNL LEWQALLFVI FLLIYCLTII GNVVITVVS QGLRLHSPMY MFLQHLSFLE VWYTSTTVPL LLANLLSWGQ AISFSACMAQ LYFFVFLGAT ECFLAFMAY DRYLAICSPL RYPFLMHRGL CARLVVSWC TGVSTGFLPS LMISRLDFCG RNQINHFFCD LPPLMLQSCS RVYITEVTIF ILSIAVLCIC FFLTLPYVIV IVSSILRIPS TSGRRKTFST CGSHLAVVTL YYGTMISMIV CPSPHLLPEI NKIISVFYTV VTPLLNPVIY SLRNKDFKEA VRKVMRRKCG ILWSTSKRKF LY
Characteristics:	Human OR11L1 full-length ORF (NP_001001959.1, 1 a.a. - 322 a.a.) recombinant protein with GST-tag at N-terminal.
Purification:	in vitro wheat germ expression system

Target Details

Target:	OR11L1
Alternative Name:	OR11L1 (OR11L1 Products)
Background:	Full Gene Name: olfactory receptor, family 11, subfamily L, member 1 Synonyms:
Gene ID:	391189
NCBI Accession:	NM_001001959

Application Details

Application Notes:	Optimal working dilution should be determined by the investigator.
Comment:	Preparation method: in vitro, wheat germ expression system Product Quality tested by: 12.5% SDS-PAGE Stained with Coomassie Blue.
Restrictions:	For Research Use only

Handling

Buffer:	50 mM Tris-HCl, 10 mM reduced Glutathione, pH =8.0 in the elution buffer.
Handling Advice:	Aliquot to avoid repeated freezing and thawing.
Storage:	-80 °C
Storage Comment:	Best use within three months from the date of receipt of this protein.

Images

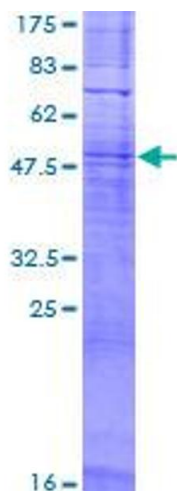


Image 1.